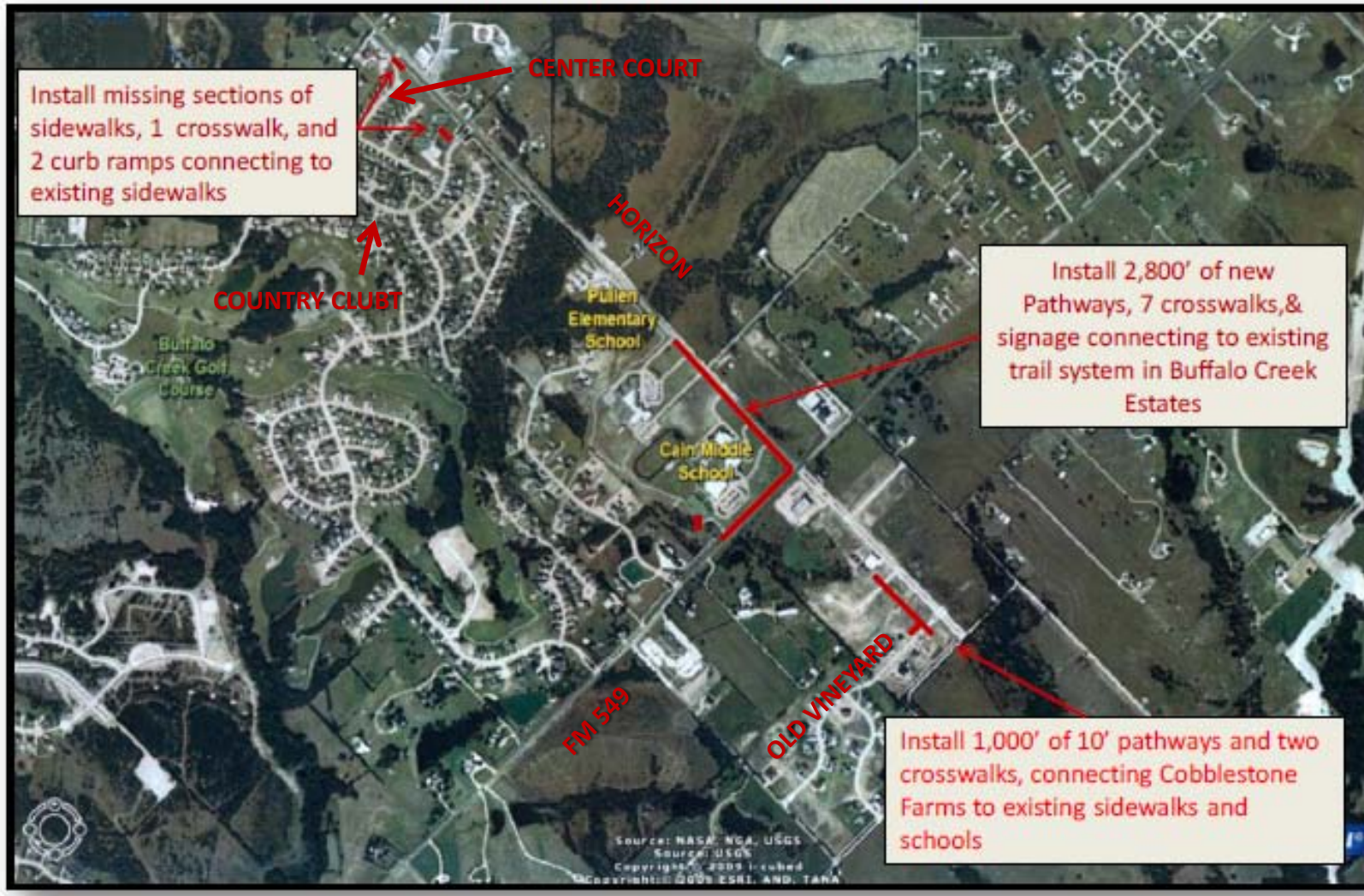


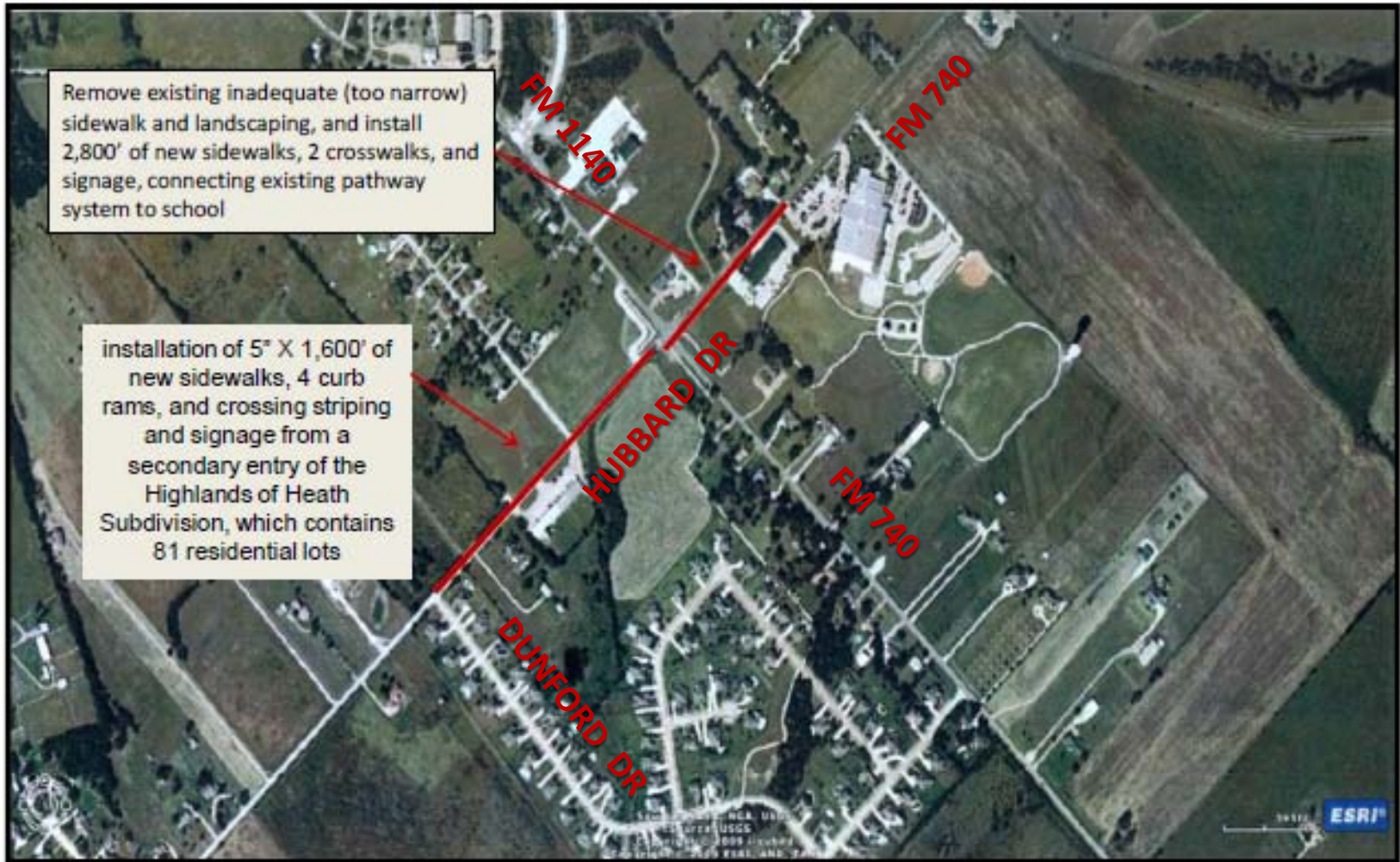
Safe Routes to School Grant

Dorothy Smith Pullen Elementary & Maurine Cain Middle School
Proposed Improvements (Project 1)



Safe Routes to School Grant

Amy Parks-Heath Elementary School Proposed Project 2



Safe Routes to School Grant

Proposed Project 3
Install 5,200' of 10' pathways, 2 crosswalks, and signage connecting
Stoneleigh Subdivision to Amy Parks-Heath School



Safe Routes to School Grant

Proposed Project 4

4,300' of 10' pathways on east and west sides of Chris Cuny Blvd. from High School Drive to FM 1140/Smirl & 900' from on eastside of Hubbard to Chris Cuny Blvd.

