

#	Keynote
02	PAINTED TILT WALL
03	BRICK VENEER
05	FIBER CEMENT SIDING - WOODTONE, ASPEN RIDGE
06	MANUFACTURED STONE VENEER, TEXAS QUARRIES - CORDOVA CREAM
07	CLEAR ANODIZED ALUMINUM STOREFRONT SYSTEM WITH DOUBLE PANE INSULATED GLAZING
08	WALL SCOFF
09	HOLLOW METAL DOOR AND FRAME WITH DRIP EDGE
10	STEEL CANOPY STRUCTURE
11	STANDING SEAM PROJECTED METAL CANOPY
12	DOWNSPOUT & SCUPPER
16	UNDER CANOPY LIGHTING
29	WALL PACK, TYP.
30	DOWNSPOUT BEYOND
31	LINE OF ROOF BEYOND
36	PREFINISHED MTL COPING
39	TYPICAL RTU

BUILDING TOTAL		
MASONRY		
TEXTURED TILT WALL	54%	
BRICK VEENER	17%	
STONE	7%	
FIBER CEMENT SIDING	22%	



**1** SOUTHWEST ELEVATION  
1/8" = 1'-0"

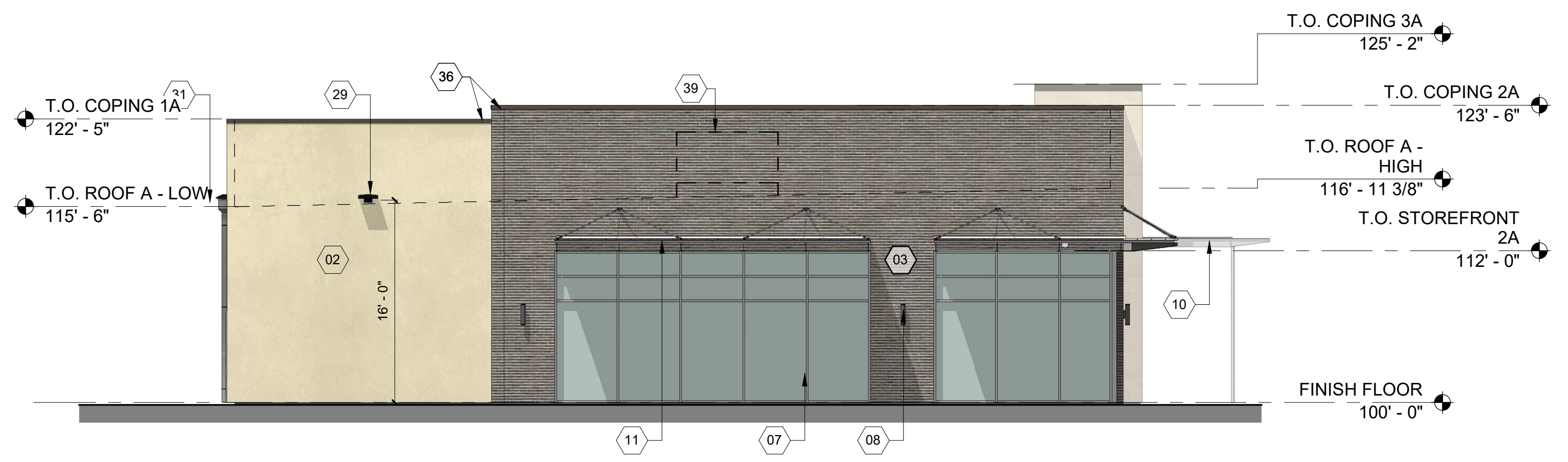
MASONRY	SF	%
BRICK VEENER	904 SF	38%
STONE	49 SF	2%
FIBER CEMENT SIDING	1436 SF	60%
<b>TOTAL SF</b>	<b>2389 SF</b>	<b>100%</b>

MASONRY	SF	%
STONE	529 SF	89%
FIBER CEMENT BOARD	66 SF	11%
<b>TOTAL SF</b>	<b>595 SF</b>	<b>100%</b>



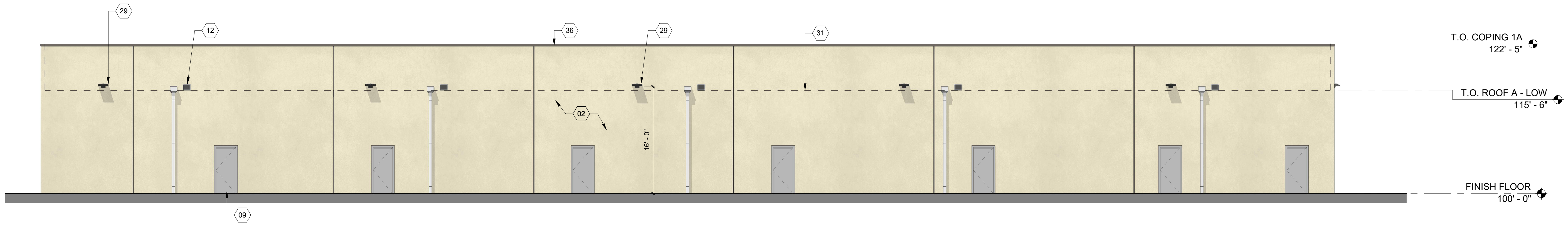
**2** SOUTHEAST ELEVATION  
1/8" = 1'-0"

MASONRY	SF	%
TEXTURED PTD TILT WALL	386 SF	44%
FIBER CEMENT SIDING	495 SF	56%
<b>TOTAL SF</b>	<b>881 SF</b>	<b>100%</b>



**3** NORTHWEST ELEVATION  
1/8" = 1'-0"

MASONRY	SF	%
TEXTURED PTD TILT WALL	462 SF	39%
STONE	45 SF	4%
BRICK VENEER	678 SF	20%
<b>TOTAL SF</b>	<b>1185 SF</b>	<b>100%</b>



**4** SOUTHWEST ELEVATION  
1/8" = 1'-0"

MASONRY	SF	%
TEXTURED PTD TILT WALL	4107 SF	100%

# BUILDING A - ELEVATIONS

HEATH RETAIL  
Heath, TX 75032



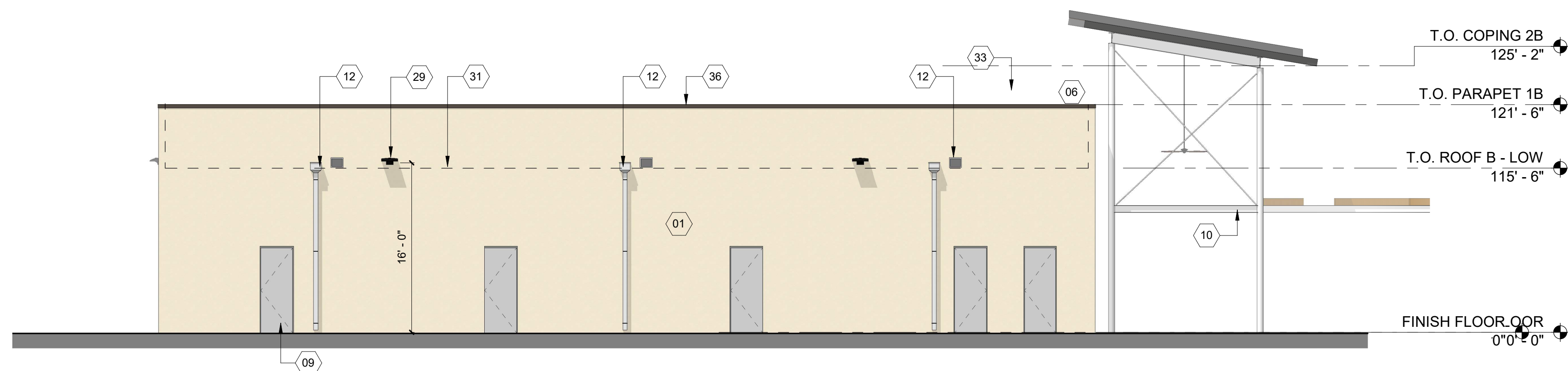
Project No. 16253.01  
Date 01.30.18

2808 Fairmount Street, Suite 300  
Dallas, Texas 75201 | 214.303.1500

3300 West 7th Street, Suite 110  
Fort Worth, Texas 76107 | 817.303.1500

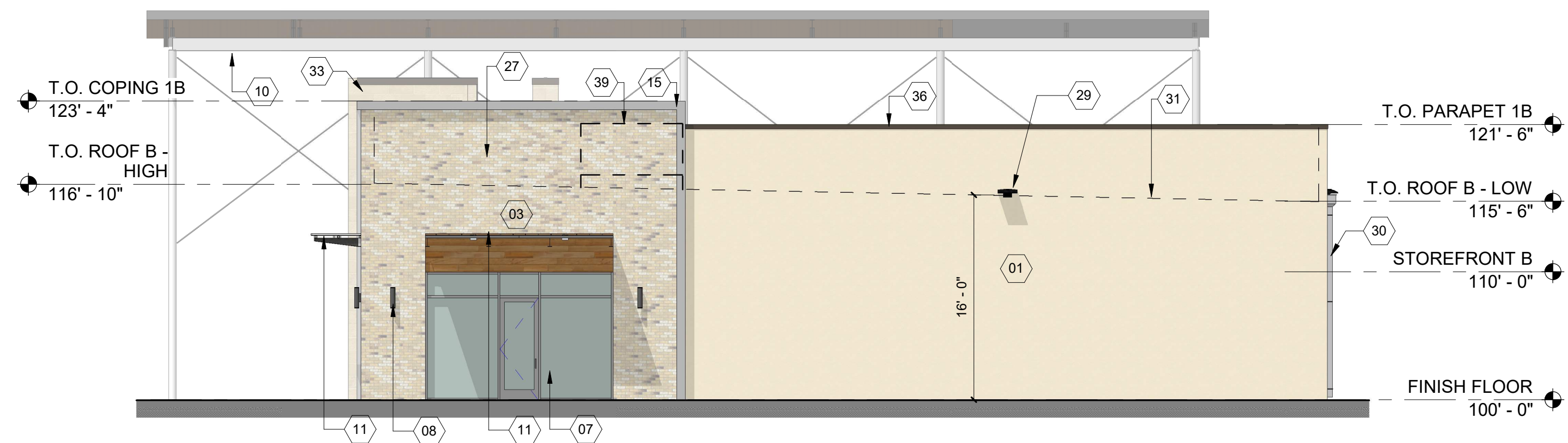
#	Keynote
01	3-COAT PLASTER
03	BRICK VENEER
05	FIBER CEMENT SIDING - WOODTONE, ASPEN RIDGE
06	MANUFACTURED STONE VENEER, TEXAS QUARRIES - CORDOVA CREAM
07	CLEAR ANODIZED ALUMINUM STOREFRONT SYSTEM WITH DOUBLE PANE INSULATED GLAZING
08	WALL SCOTCH
09	HOLLOW METAL DOOR AND FRAME WITH DRIP EDGE
10	STEEL CANOPY STRUCTURE
11	STANDING SEAM PROJECTED METAL CANOPY
12	DOWNSPOUT & SCUPPER
15	FRAMED OUT EIFS BAND
23	EIFS FRAME
26	STOREFRONT SYSTEM W/ INSULATED SPANDREL GLAZING AT GREY PANELS
27	TENANT SIGNAGE AREA, PROVIDE DENSGLASS SHEATHING FOR MOUNTING
29	WALL PACK, TYP.
30	DOWNSPOUT BEYOND
31	LINE OF ROOF BEYOND
33	PARAPET RETURN
36	PREFINISHED MTL COPING
39	TYPICAL RTU

BUILDING TOTAL	
MASONRY	
PLASTER	64%
STONE	4%
BRICK VENEER	18%
EIFS	2%
FIBER CEMENT SIDING	12%



MASONRY	SF	%
PLASTER	1746	100%

**4 WEST ELEVATION**  
1/8" = 1'-0"



MASONRY	SF	%
STONE	36 SF	2%
BRICK VENEER	368 SF	24%
PLASTER	1063 SF	69%
EIFS	32 SF	2%
FIBER CEMENT SIDING	44 SF	3%
<b>TOTAL SF</b>	<b>1543 SF</b>	<b>100%</b>

**2 NORTH ELEVATION**  
1/8" = 1'-0"



MASONRY	SF	%
STONE	97 SF	9%
PLASTER	873 SF	77%
FIBER CEMENT SIDING	170 SF	14%
<b>TOTAL SF</b>	<b>1140 SF</b>	<b>100%</b>

**3 SOUTH ELEVATION**  
1/8" = 1'-0"



MASONRY	SF	%
STONE	97 SF	7%
BRICK VENEER	693 SF	52%
EIFS	52 SF	4%
FIBER CEMENT SIDING	485 SF	37%
<b>TOTAL SF</b>	<b>1327 SF</b>	<b>100%</b>

**1 EAST ELEVATION**  
1/8" = 1'-0"

# BUILDING B- ELEVATIONS

HEATH RETAIL  
Heath, TX 75032

Project No. 16253.01  
Date 12.15.17

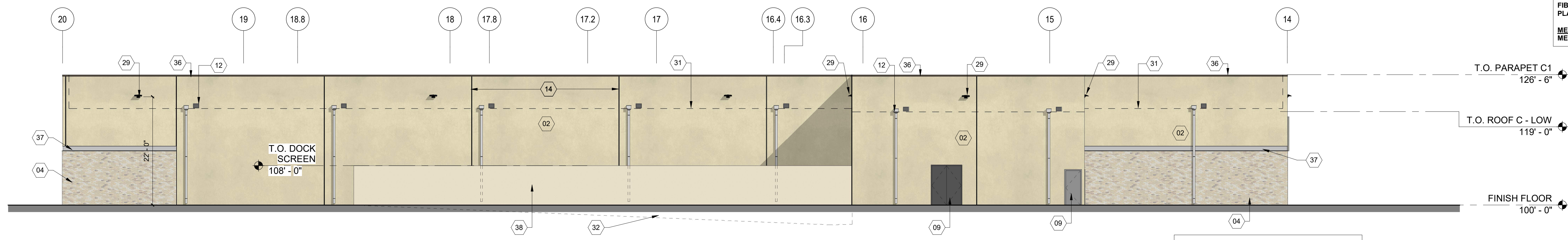


2808 Fairmount Street, Suite 300  
Dallas, Texas 75201 | 214.303.1500

3300 West 7th Street, Suite 110  
Fort Worth, Texas 76107 | 817.303.1500

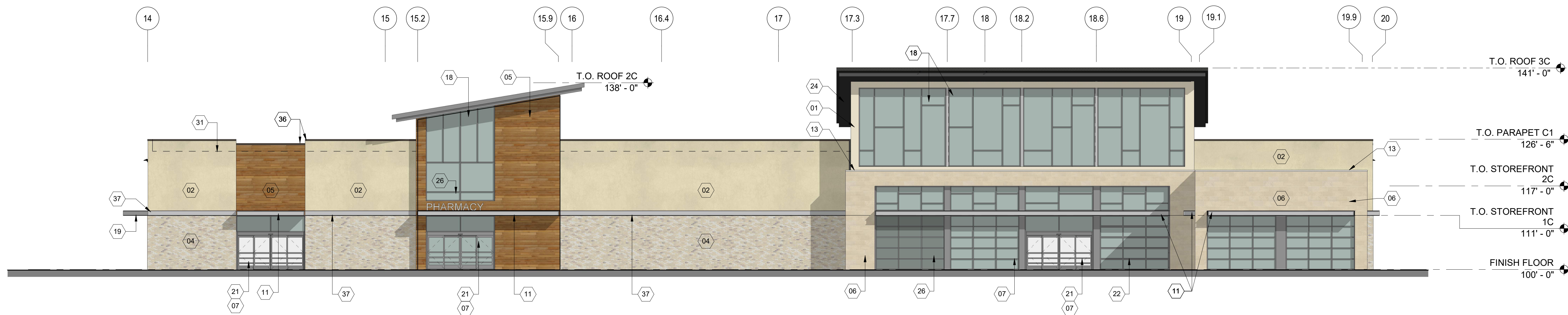
#	Keynote
01	3-COAT PLASTER
02	PAINTED TILT WALL
04	THIN BRICK VENEER
05	FIBER CEMENT SIDING - WOODTONE, ASPEN RIDGE
06	MANUFACTURED STONE VENEER, TEXAS QUARRIES - CORDOVA CREAM
07	CLEAR ANODIZED ALUMINUM STOREFRONT SYSTEM WITH DOUBLE PANE INSULATED GLAZING
09	HOLLOW METAL DOOR AND FRAME WITH DRIP EDGE
11	STANDING SEAM PROJECTED METAL CANOPY
12	DOWNSPOUT & SCUPPER
13	CAST STONE LEDGE COPING
14	TILT WALL PANEL JOINT
18	CURTAIN WALL, ANODIZED ALUMINUM
19	DRIVE-THRU CANOPY
21	SLIDING DOOR
22	GLASS PANEL GARAGE DOOR
24	METAL SOFFIT PANELS, LINEAR PLANK SYSTEM
26	STOREFRONT SYSTEM W/ INSULATED SPANDREL GLAZING AT GREY PANELS
29	WALL PACK, TYP.
31	LINE OF ROOF BEYOND
32	LOADING DOCK RAMP BEYOND
36	PREFINISHED MTL COPING
37	STEEL CHANNEL
38	TILT WALL LOADING DOCK SCREEN WALL

BUILDING TOTAL		
MASONRY		
TEXTURED PTD TILT WALL	62%	
STONE	6%	
BRICK VENEER	22%	
FIBER CEMENT SIDING	5%	
PLASTER	2%	
METAL		
METAL CHANNEL	2%	



MASONRY		
TEXTURED PTD TILT WALL	5313 SF	83%
BRICK VENEER	1039 SF	16%
METAL		
METAL CHANNEL	94 SF	1%
TOTAL SF	6446 SF	100%

**2 WEST ELEVATION**  
3/32" = 1'-0"



MASONRY		
TEXTURED PTD TILT WALL	1628 SF	36%
STONE	769 SF	17%
BRICK VENEER	1098 SF	24%
PLASTER	196 SF	4%
FIBER CEMENT SIDING	723 SF	16%
METAL		
METAL CHANNEL	144 SF	3%
TOTAL SF	4556 SF	100%

**1 EAST ELEVATION**  
3/32" = 1'-0"

# TOM THUMB- ELEVATIONS

HEATH RETAIL  
Heath, TX 75032



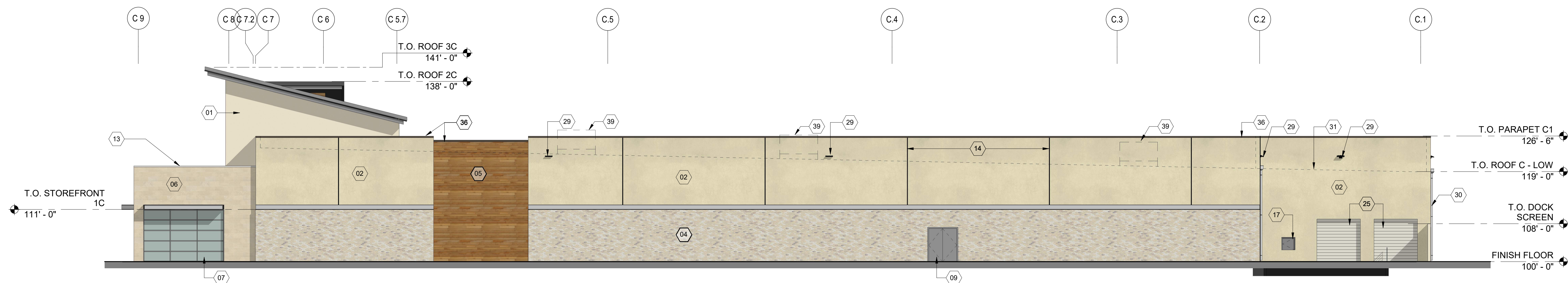
2808 Fairmount Street, Suite 300  
Dallas, Texas 75201 | 214.303.1500

3300 West 7th Street, Suite 110  
Fort Worth, Texas 76107 | 817.303.1500

Project No. 16253.01  
Date 12.15.17

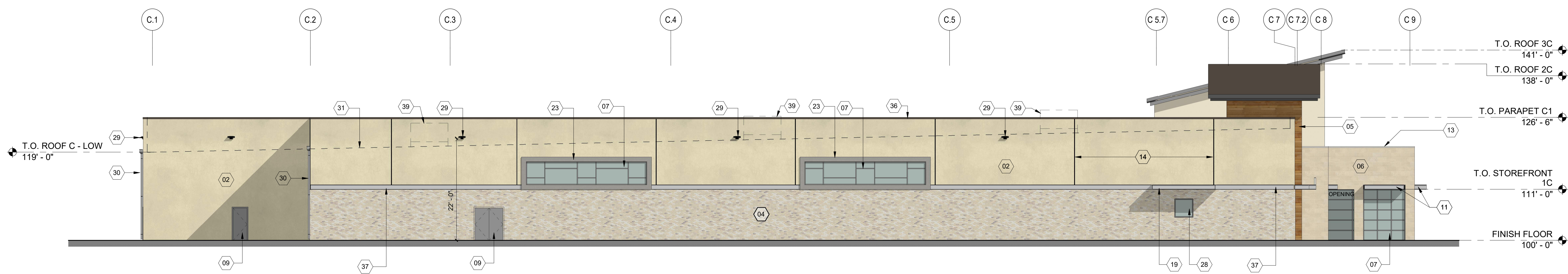
#	Keynote
01	3-COAT PLASTER
02	PAINTED TILT WALL
04	THIN BRICK VENEER
05	FIBER CEMENT SIDING - WOODTONE, ASPEN RIDGE
06	MANUFACTURED STONE VENEER, TEXAS QUARRIES - CORDOVA CREAM
07	CLEAR ANODIZED ALUMINUM STOREFRONT SYSTEM WITH DOUBLE PANE INSULATED GLAZING
09	HOLLOW METAL DOOR AND FRAME WITH DRIP EDGE
11	STANDING SEAM PROJECTED METAL CANOPY
13	CAST STONE LEDGE COPING
14	TILT WALL PANEL JOINT
17	TRASH COMPACTOR DOOR
19	DRIVE-THRU CANOPY
23	EIFS FRAME
25	LOADING DOCK GARAGE DOOR
28	PHARMACY PICK UP WINDOW
29	WALL PACK, TYP.
30	DOWNSPOUT BEYOND
31	LINE OF ROOF BEYOND
36	PREFINISHED MTL COPING
37	STEEL CHANNEL
39	TYPICAL RTU

BUILDING TOTAL		
<b>MASONRY</b>		
TEXTURED PTD TILT WALL	62%	
STONE	6%	
BRICK VENEER	22%	
FIBER CEMENT SIDING	5%	
PLASTER	2%	
<b>METAL</b>		
METAL CHANNEL	2%	



MASONRY		
TEXTURED PTD TILT WALL	3493 SF	51%
STONE	308 SF	5%
BRICK VENEER	2064 SF	30%
PLASTER	307 SF	4%
FIBER CEMENT SIDING	507 SF	7%
<b>METAL</b>		
METAL CHANNEL	193 SF	3%
<b>TOTAL SF</b>	<b>6872 SF</b>	<b>100%</b>

**2 NORTH ELEVATION**  
3/32" = 1'-0"



MASONRY		
TEXTURED PTD TILT WALL	3584 SF	54%
EIFS	132 SF	2%
STONE	411 SF	6%
BRICK VENEER	2266 SF	34%
FIBER CEMENT SIDING	96 SF	2%
<b>METAL</b>		
METAL CHANNEL	156 SF	2%
<b>TOTAL SF</b>	<b>6645 SF</b>	<b>100%</b>

**1 SOUTH ELEVATION**  
3/32" = 1'-0"

# TOM THUMB - ELEVATIONS

HEATH RETAIL  
Heath, TX 75032

Project No. 16253.01  
Date 12.15.17



2808 Fairmount Street, Suite 300  
Dallas, Texas 75201 | 214.303.1500

3300 West 7th Street, Suite 110  
Fort Worth, Texas 76107 | 817.303.1500