

# Parks, Recreation, and Trails Master Plan

City Council  
March 27, 2018



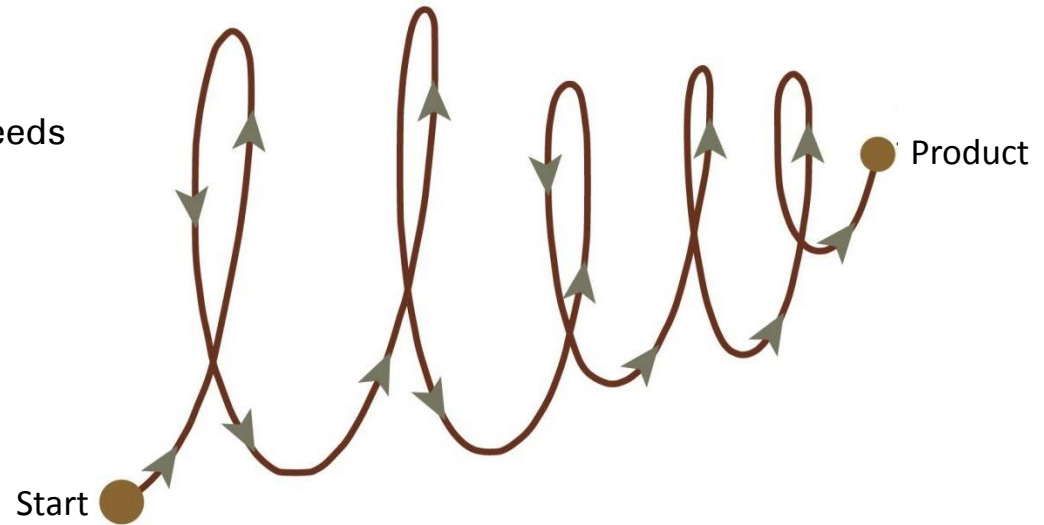
City of  
Heath  
Texas



la terra studio

# Planning Process

- Develop Goals and Objectives
- Inventory of Areas and Facilities
- Needs Assessment And Identification
- Public Participation
- Plan Implementation and prioritization of needs
- Area and facility standards
- Draft Master plan
- Final Master plan
- City Council Adoption of plan



# Plan Structure

---

Introduction

Heath At a  
Glance

Parks and Open  
Space

Trails and  
Pathways

Recreation and  
Programming

Implementation

## Intro & At a Glance

- Summarizes community feedback
- Describes role of Department as a recreation provider
- Describes related planning efforts
- Provides demographics and community profile



# Vision

---

***A parks and recreation system which preserves a rural feel and provides active lifestyle opportunities with family-friendly amenities.***

- **Parks & Open Space**

To keep a rural feel in Heath by maintaining existing parks and making new parks that provide open space and family-friendly amenities.

- **Trails & Sidewalks**

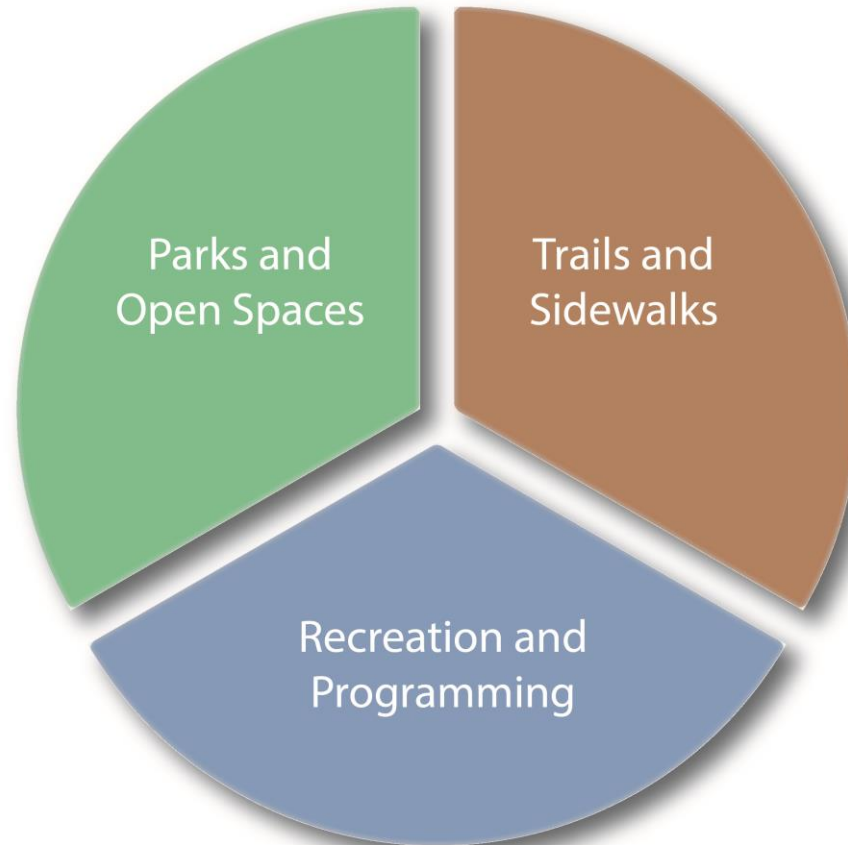
To add strategic trails and pathways in the community for recreation, leisure, and transportation connections.

- **Recreation & Programming**

To incrementally build a formal recreation program by introducing new facilities and programming.

# Topic- Oriented Chapters & Goals

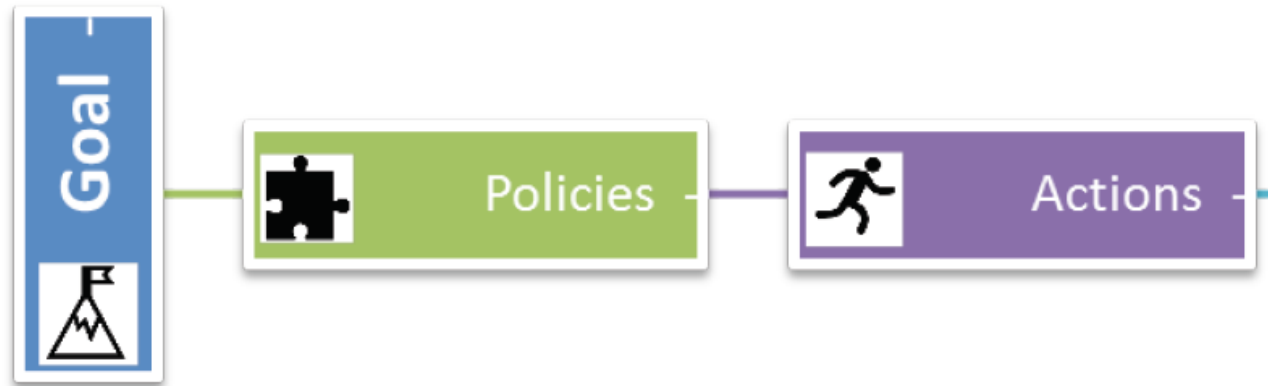
---



# Goals, Policies, Actions

---

Goals broadly express what to achieve, policies tell what will need to be done to achieve the goals, actions tell us how exactly to implement the policies.



# Respondent Observations

---

- Highly active community members (i.e. participation rates are high overall but not necessarily within Heath)
- Significant number of children in the community as residents and/or visitors (ex. grandchildren)
  - 68 percent of respondents had children under the age of 19 in their home
- High percentage of community members utilizing facilities in Rockwall
- Over 42 percent of respondents had been a resident of Heath for more than 10 years
- Senior citizen and accessibility themes present



## Respondent Observations (cont.)

---

- High golf participation
- High gymnastics participation
- Higher than average utilization of trails for “transportation” than other DFW cities
- Significant dissatisfaction with facilities, programming/activities, and maintenance
- Support for fees and taxes to support new parkland for specific purposes as voiced

# Workshop Feedback

## STRENGTHS

- 10 Natural open areas
- 8 Lake/beach
- 4 Safety/security
- 4 Trails
- 3 Location
- 2 Community activities
- 2 Maintenance
- 2 Small town feel
- 1 Connectivity
- 1 Family-friendly amenities
- 1 Non-specific
- 1 Pavilions/picnic areas
- 1 Playgrounds
- 1 Restrooms in parks
- 1 Room to grow
- 1 Schools
- 1 Variety

## WEAKNESSES

- 17 Trail connectivity
- 8 Sports/event complex
- 4 Safety/security
- 3 Aquatics
- 3 Maintenance
- 3 Parkland
- 2 Small/neighborhood parks
- 1 Non-specific
- 1 Accessibility
- 1 Infrastructure
- 1 Lack of town center
- 1 Lack of vision
- 1 Recreation programming



# Workshop Feedback

## OPPORTUNITIES

- 6 Community gathering spaces
- 6 Court sports
- 5 Farmers market
- 5 Healthy/active living
- 3 Implement plan
- 2 Lakeside amenities
- 2 Maintain rural feel
- 2 Pavilions/picnic areas
- 1 Playgrounds
- 1 Private open space requirements
- 1 Recreation center
- 1 Senior center
- 1 Accessibility
- 1 Outdoor pool/splashpad
- 1 Sense of community
- 1 Natural/open areas preservation
- 1 Fundraising/volunteering/partnerships
- 1 Sports/event complex
- 1 Non-specific
- 1 Trails and pathways

## CHALLENGES

- 12 Funding
- 6 Growth issues/management
- 4 Safety/security
- 3 Land for future parks
- 3 Diverse perspectives
- 2 Trail connectivity
- 2 Open space preservation
- 2 Maintenance
- 2 Density prevention
- 1 Visitors
- 1 Staffing
- 1 Sports/event complex
- 1 Retail development
- 1 Long term City commitment
- 1 Less need for parks
- 1 Lack of maintenance
- 1 Development compliance
- 1 Communication/transparency



# Biggest Feedback Opportunity Themes

---

- Multi-purpose indoor recreation center, including areas for children, adults, and seniors with a gym and aquatics
- More neighborhood parks with shade and playground equipment
- Outdoor Sports & Event Complex with soccer, baseball, and softball fields, basketball courts, trails, splash pad, playground, multi-use concert/festival area, and/or a skate park (all with ample shade)
- Natural/open areas to maintain rural feel and control density
- Maintenance
- Trails
- Public outdoor swimming pool
- Lake-front parks, trails, fishing spots, and paddling amenities

# New Sports/Event Complex

---

- 16-22 percent of respondents want fields and courts added to the City of Heath
- Second ranked funding priority, generally, after a new senior center (only six selections were available)
- Although feedback was disjointed for “sports complex,” very strong themes of support were present for:
  - soccer, baseball, and softball fields,
  - trails,
  - splash pad
  - outdoor swimming pool,
  - playgrounds,
  - multi-use concert/festival area, and/or
  - a skate park

# New Sports/Event Complex



- MCDC Property  
Approximately 50 Ac.

# New Sports/Event Complex



## Sports Complex Study Area

This sketch was prepared as a diagrammatic representation of a potential sports complex configuration on the 50 acre city owned property west of the high school. It is intended for planning and spacial relation purposes only. This area is detailed in the implementation plan of this report as potential to be studied in more detail. Elements and layout shown on the plan are subject to change.

- Soccer, baseball, and softball fields
- Trails
- Splash pad
- Outdoor swimming pool
- Playground(s)/play equipment
- Multi-use concert/festival area
- Skate park/concrete skating-type areas
- Restrooms

# Sports/Event Complex - Case Studies



- Andy Brown Park, Coppell, TX
- Approximately 57 Ac.
- Tournament Softball
- Soccer
- Shade Structure
- Playground
- Walking Trails
- Parking



# Sports/Event Complex - Case Studies



- Oak Grove Park, Grapevine, TX
- Approximately 42 Ac. (Baseball)  
37 Ac. (Soccer)
- Tournament Baseball
- Soccer
- Shade Structures
- Playground
- Walking Trails
- Exercise Stations
- Parking

# Sports/Event Complex - Case Studies



- Heights Park, Richardson, TX
- Approximately 32 Ac.
- Softball
- Soccer
- Shade Structure
- Playground
- Walking Trails
- Recreation Center
- Aquatics Center
- Parking
- Tennis

# Sports/Event Complex - Case Studies



- Frisco Commons, Frisco, TX
- Approximately 75 Ac.
- Passive Open Space
- Shade Structure
- Playground
- Walking Trails
- Natural Forest Area
- Inclusive Playground
- Pond
- Sprayground
- Parking

# Parks and Open Space

- Intro
- Needs Assessment
- Standards
- Inventory
- Strategies



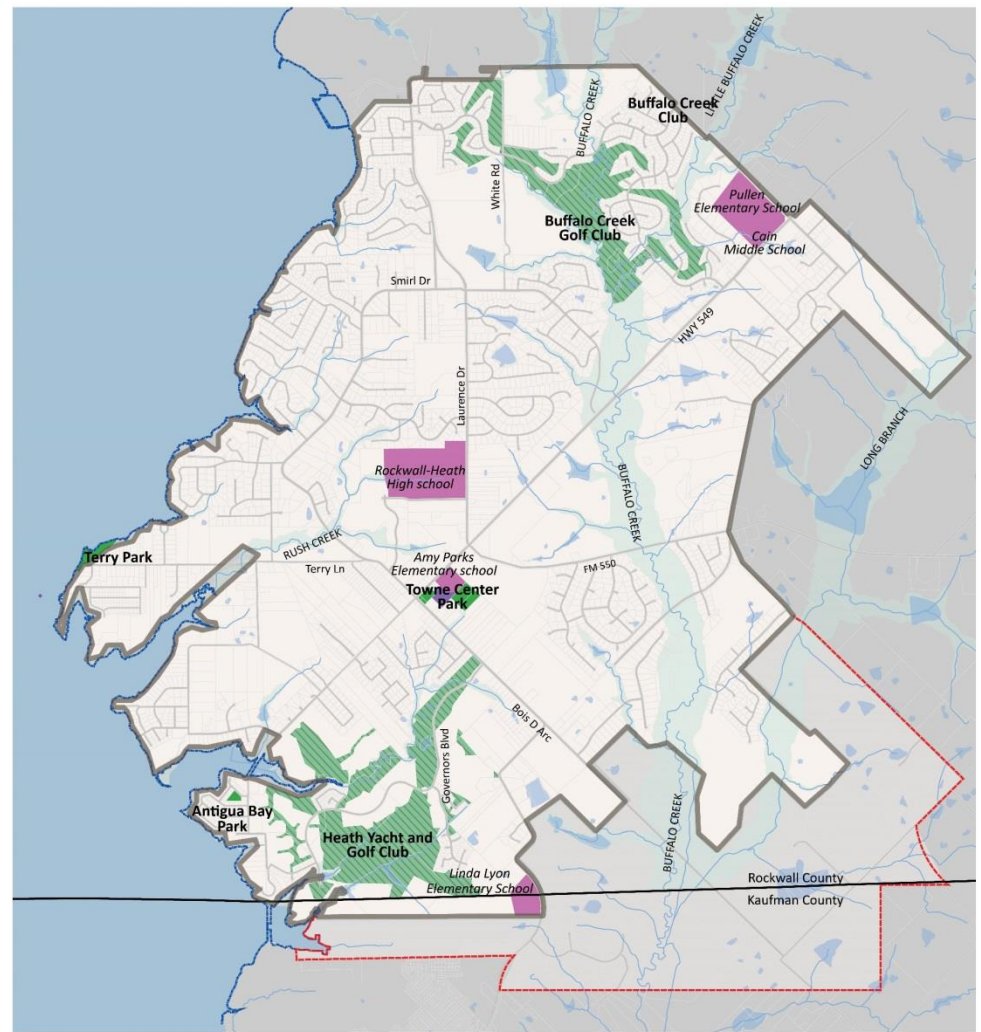
## Parks & Open Space

**GOAL:** To keep a rural feel in Heath by maintaining existing parks and making new parks that provide open space and family-friendly amenities.



# Parks & Open Space

- Towne Center Park – 18 Acres
- Terry Park – 6.6 Acres
- Antigua Bay Park – 1.7 Acres



## Parks & Open Space - *Needs*

---

- Expand the City's parkland area by focusing on underserved parks and recreation areas.
- Expand the City's parkland area by partnering with developers and other individuals and groups.
- Ensure maintaining existing parks and recreation facilities, including providing a minimum set of improvements, is a high priority



# Parks & Open Space - *Standards*

---

For this Parks, Recreation & Open Space Master Plan, the following park categories are being used:

- Neighborhood parks
- Community Parks
- Natural Areas and / or Open Space
- Special Use Park

## **Population-based Assessment**

- Provides a ratio of acreage to population, measured against NRPA standards and like sized communities.



# Parks & Open Space - *Standards*

## Neighborhood parks

- Playground structures
- Open space for both active & passive uses
- Pavilion with picnic tables
- Park amenities such as drinking fountains, benches, signage, grills, trash cans, trees and landscaping
- Hike/bike trails

<b>NRPA Recommended LOS</b>	<b>1.5 Acres for every 1,000 residents</b>
2017 Population Estimate	7,820 (NCTCOG)
2017 Target LOS	11.73 Acres
2017 Provided LOS	1.7 Acres
Population Capacity Projection	21,000 (Estimate per Comp Plan)
Capacity Projected Target LOS	31 Acres

# Parks & Open Space - *Standards*

## Community Parks

A community park is a large and much more versatile type of park developed to serve the community. These parks can be oriented to provide both active and passive recreational facilities for all ages. A community park can serve several neighborhood areas and can typically be conveniently accessed by automobile.

<b>NRPA Recommended LOS</b>	<b>5 Acres for every 1,000 residents</b>
2017 Population Estimate	7,820 (NCTCOG)
2017 Target LOS	39 Acres
2017 Provided LOS	24.6 Acres
Population Capacity Projection	21,000 (Estimate per Comp Plan)
Capacity Projected Target LOS	105 Acres

# Parks & Open Space - *Standards*

## Natural/Open Space

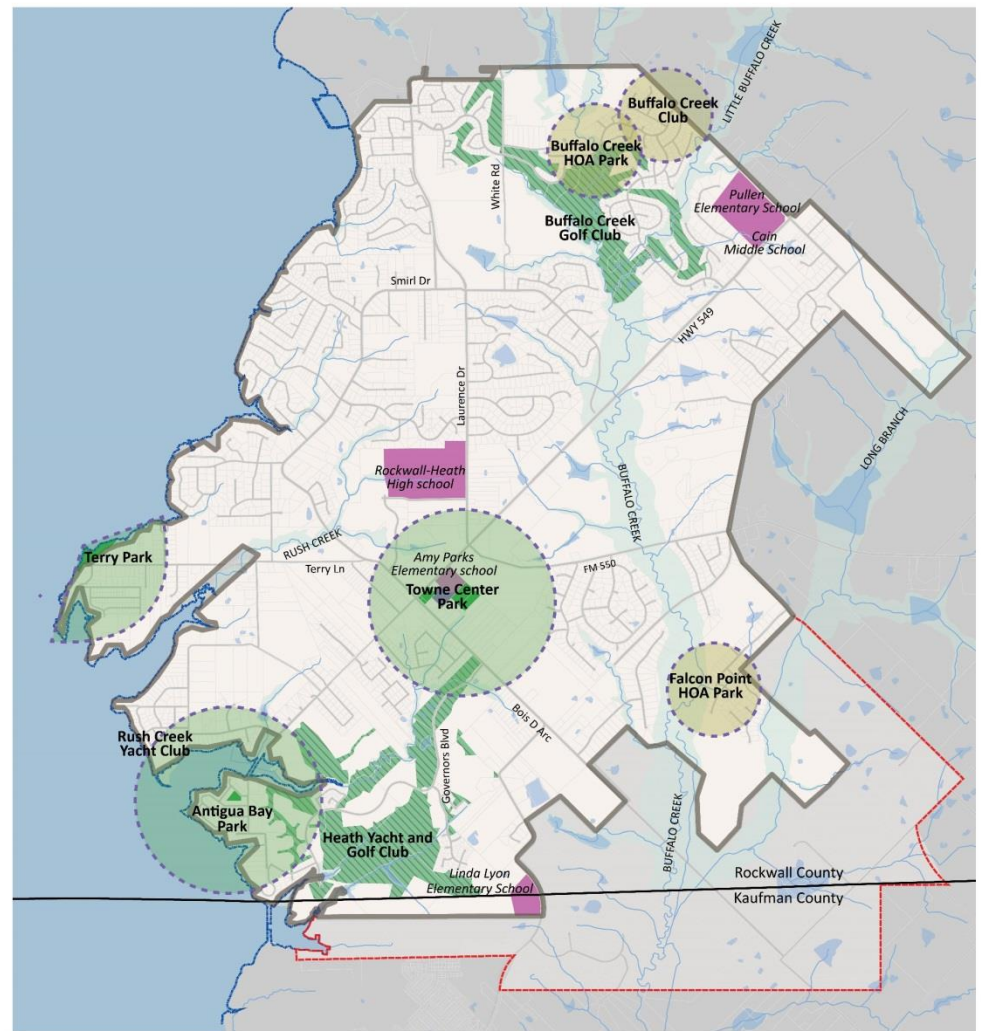
These areas are natural and are generally left undisturbed, but are not necessarily characterized as land preservations. No organized, active recreational uses are usually accommodated in these areas; they are primarily intended for passive recreational use.

<b>NRPA Recommended LOS</b>	<b>3 Acres for every 1,000 residents</b>
2017 Population Estimate	7,820 (NCTCOG)
2017 Target LOS	23.4 Acres
2017 Provided LOS	0 Acres
Population Capacity Projection	21,000 (Estimate per Comp Plan)
Capacity Projected Target LOS	63 Acres

# Parks & Open Space

## Pedestrian Shed-based Assessment

- Provides a geographic range of where certain parks and/or open space may be needed, measured against a 1/2 mile radius for typical 10 minute pedestrian walk.



### LEGEND

- City-Owned Parks
- RISD-Owned Land
- Golf Clubs
- Land Use Agreement with RISD

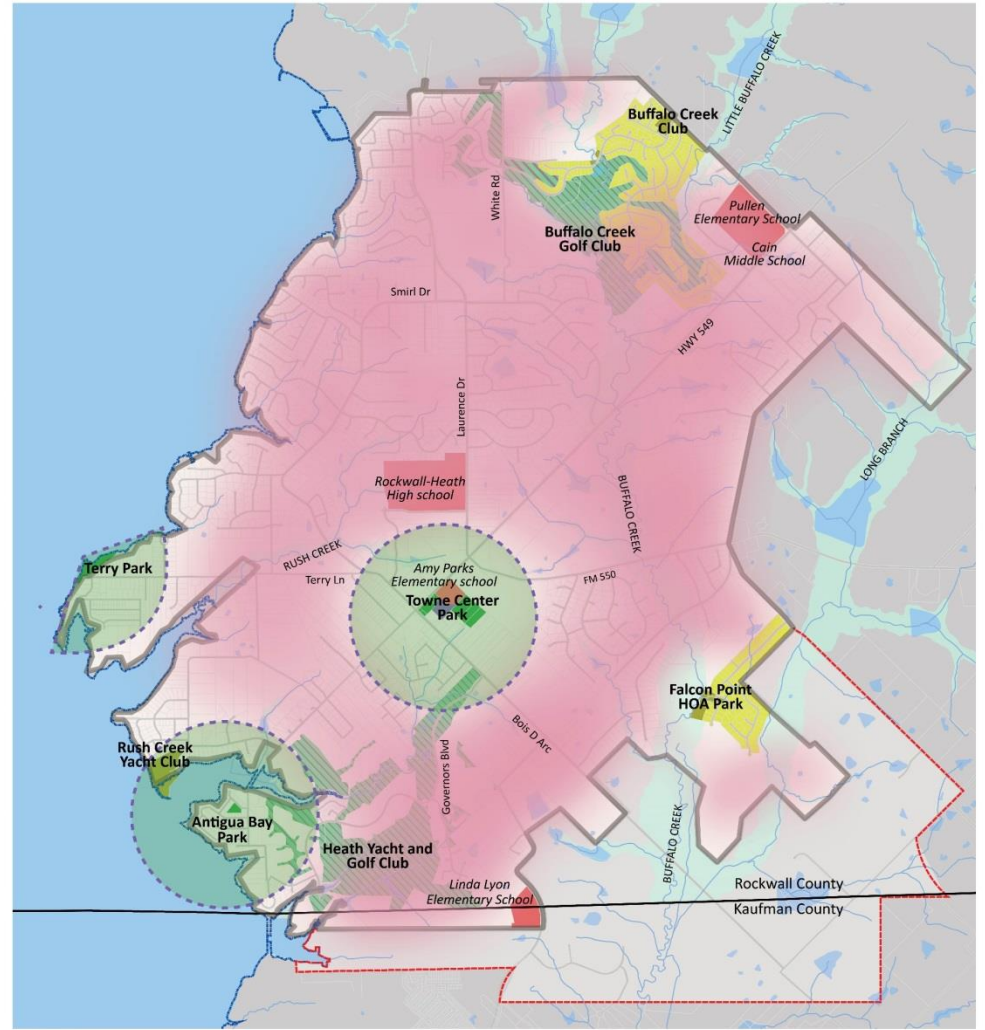
- 1/2 Mile Radius/  
10 Minute Walk  
City Parks
- 1/4 Mile Radius/  
5 Minute Walk  
Private Parks/Open Space



# Parks & Open Space

## Pedestrian Shed-based Assessment

- Areas that fall outside of the pedestrian shed analysis are considered to be underserved areas of the city.
- Residents that live in these areas are more than a 5 min walk from a city park



### LEGEND

- City-Owned Parks (Green)
- Private/HOA Parks (Light Green)
- RISD-Owned Land (Red)
- Golf Clubs (Dark Green)
- Land Use Agreement with RISD (Purple)
- Publicly Served Areas 10 Minute Walk (Dashed Green Circle)
- Underserved Areas (Pink)
- Privately Served HOA (Yellow)



## UNDERSERVED AREAS Heath Parks, Trails, Open Space Master Plan



# Parks Recommendations

## Towne Center Park



- Playground upgrade/replacement
- Shade structure for playground
- Accessibility study

## Terry Park



- Playground upgrade/replacement (potential location for new all-abilities playground)
- Shade structure for playground
- Waterfront seating areas w/ shade
- Trail connection to future Terry Road Trail
- Parking and access control study

## Antigua Bay Park



- Playground upgrade/replacement (potential location for new all-abilities playground)
- Shade structure for playground
- Expand park south to FM 740
- Master plan the entire area for new active- use park and civic complex
- Implement temporary uses for land already acquired during planning phases
- Explore land assemblage/reconfiguration
- Trail connections
- Add irrigation to back field
- Add lighting to back field

# Trails & Sidewalks

- Intro
- Needs Assessment
- Standards
- Inventory
- Strategies



## Trails & Sidewalks

---

**GOAL:** To add strategic trails and pathways in the community for recreation, leisure, and transportation connections.





# Trails & Sidewalks

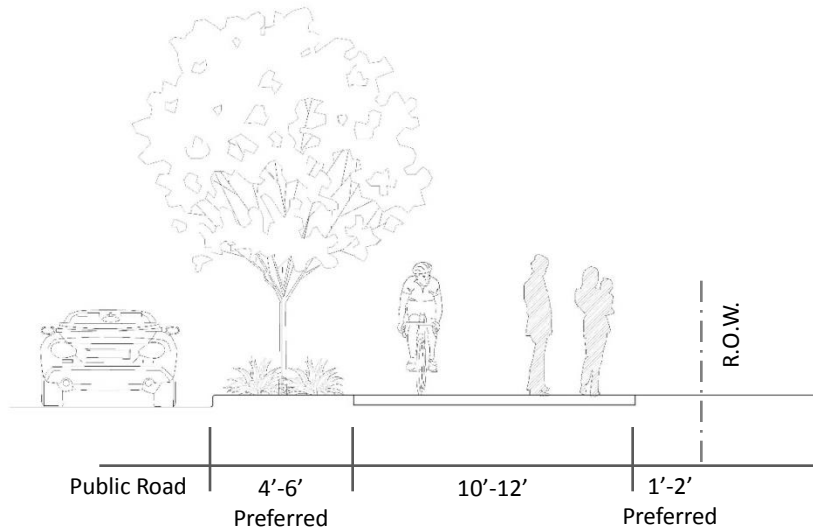
## *Needs*

- Need for better maintenance and amenities along trails
- Need separated bikeways
- Need more connections from residential neighborhoods to parks and recreation destinations
- Need more connections between parks and recreation areas
- Need for better communication regarding locations of trails
- Desire for more nature-centered activities







# Trails & Sidewalks *Standards*

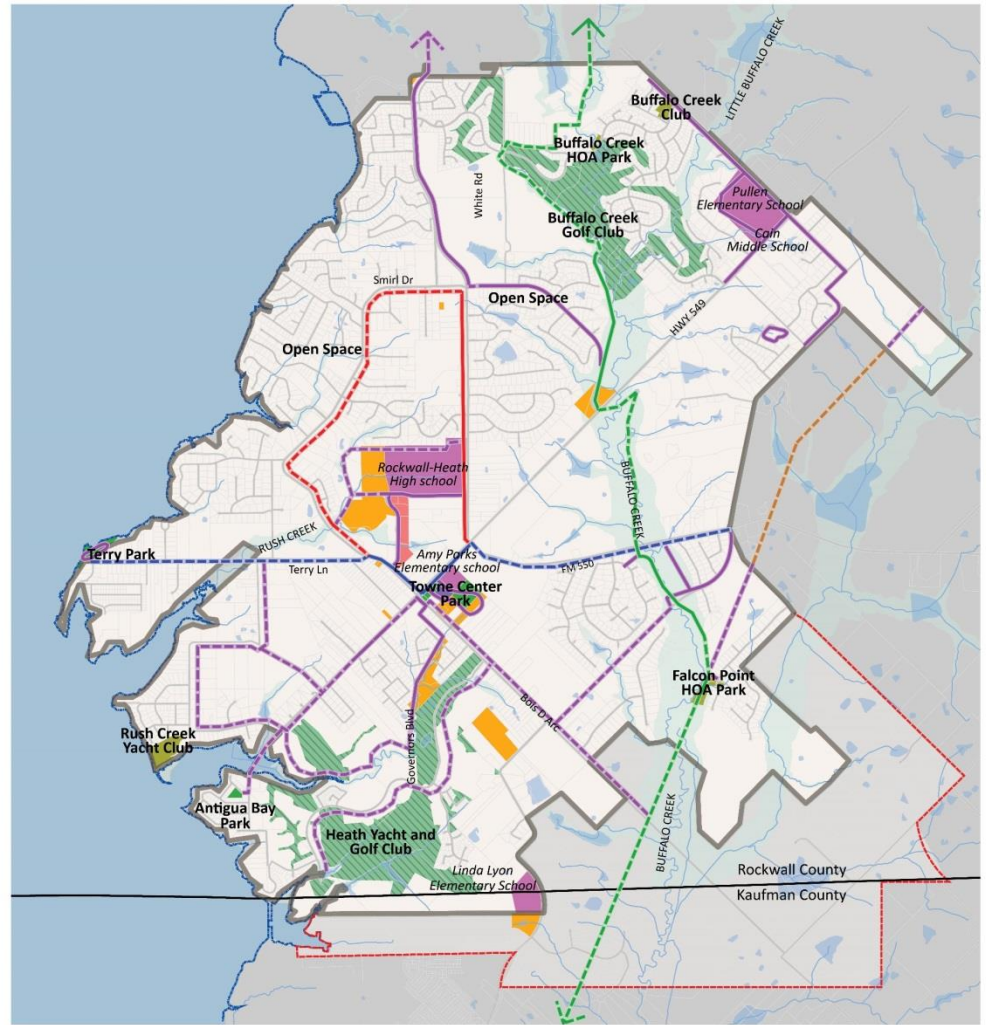
- **Community Trails: 10' – 12' Concrete Trail**
- **Neighborhood Sidewalks: 5'-8' Concrete**
- **Soft Surface Trail: 4'-12' multi-surface trail**











# Trails & Sidewalks Standards

## LEGEND

- Terry Lane Trail 
- Buffalo Creek Trail 
- City Center Trail 
- Heath Trails 



## LEGEND

- |   |   |
|---|---|
| Priority 1 Trail Existing  | Priority 3 Trail Existing  |
| Priority 1 Trail Proposed  | Priority 3 Trail Proposed  |
| Priority 2 Trail Existing  | Priority 4 Trail Existing  |
| Priority 2 Trail Proposed  | Priority 4 Trail Proposed  |



**PROPOSED TRAILS**  
Heath Parks, Trails, Open Space Master Plan



# Recreation & Programming

- Intro
- Needs Assessment
- Standards
- Inventory
- Strategies



# Recreation & Programming *Needs*

---

- GOAL: To incrementally build a formal recreation program by introducing new facilities and programming.

# Recreation & Programming *Needs*

---

- Provide additional recreation facilities within the city.
  - New areas for specialty recreation opportunities
  - Focus on providing recreation access to the lake.
  - Complete a detailed analysis on what types of sports fields and courts are desired, needed, and feasible in Heath.
- Enhance existing recreation programming and communication.
  - Communicate where recreation access, especially lake access, is permitted to the public via the City website, wayfinding and on-site signage, and improvements as applicable.
  - Lake access and current use regulation should be clearly designated.
  - Current programs, special events, and other recreation opportunities available to the community should be communicated.

# Implementation

- Intro
- Purpose
- Partners in Progress
- Plan Updates
- Implementation Matrix
- Funding Sources



## Implementation

---

- Action-packed draft for a game plan to make improvements and sustain success

- **Immediate** (within 2 years)
- **Short-Term** (within 5 years)
- **Mid-Term** (within 7 years)
- **Long-term** (within 10 years)
- **Ongoing** (no specific time frame)



# Top Recommendations

---

1. Plan, design, and construct a **multi-purpose indoor recreation center**
  - Areas for children
  - Areas for adults
  - Areas for seniors
  - Gym
  - Aquatics/indoor pool
2. Add shade to existing parks and recreation system assets
3. Add more neighborhood parks with shade, playgrounds, and picnic tables/pavilions.
4. Plan, design, and construct a phased Sports & Event Complex
5. Add multi-use trail connections (prioritized)
  - Soft surface, nature
  - Standard hard surface
  - Soft surface mountain bike trail
6. Add an outdoor swimming pool (possibly connected to Sports & Event Complex or Indoor Recreation Center)

# Implementation

ACTION PLAN FOR GOAL 1 - PARKS AND OPEN SPACES				
Policy No.	Action No.	Recommended Action	Potential Time Frame	Cost
<b>GOAL 1: To keep a rural feel in Heath by maintaining existing parks and making new parks that provide open space and family-friendly amenities.</b>				
A) Policy		Acquire and/or receive new parkland to increase levels of service within the Parks and Recreation System.		
	i) Action	Focus on attaining parkland in areas that do not have a park within walking distance.	<i>Ongoing</i>	\$\$\$\$
	ii) Action	Review the balance of all parkland fees collected during annual city fee schedule review to strategize whether acquisition of certain properties consistent with level of service deficits is possible.	<i>Short-Term</i>	\$\$
	iii) Action	Encourage private development to dedicate and develop new neighborhood parks as new development occurs instead of paying parkland fees.	<i>Ongoing</i>	\$\$
B) Policy		Plan or design specific park improvements to be installed and/or completed.		
	i) Action	Master Plan and design a phased Sports and Events Complex including, but not limited to, the following: <ul style="list-style-type: none"> <li>• Soccer, baseball, and softball fields</li> <li>• Trails</li> <li>• Splash pad</li> <li>• Outdoor swimming pool</li> <li>• Playground(s)/play equipment</li> <li>• Multi-use concert/festival area</li> <li>• Skate park/concrete skating-type areas</li> </ul>	<i>Short-Term</i>	\$\$

# Implementation

ACTION PLAN FOR GOAL 1 - PARKS AND OPEN SPACES				
Policy No.	Action No.	Recommended Action	Potential Time Frame	Cost
<b>GOAL 1: To keep a rural feel in Heath by maintaining existing parks and making new parks that provide open space and family-friendly amenities.</b>				
	ii) Action	Construct a phased Sports and Events Complex	<i>Long-Term</i>	\$\$\$\$
	iii) Action	Master plan the Buffalo Creek corridor (including Little Buffalo Creek) as a natural asset to the Parks and Recreation System and develop adjacent or through-areas accordingly.	<i>Short-Term</i>	\$\$
	iv) Action	Design new parks with a minimum set of amenities.	<i>Short-Term</i>	\$
<b>C) Policy</b>		<b>Install park improvements consistent with the Plan or design prepared for each park.</b>		
	i) Action	Develop three parks with a minimum set of amenities within the next five years (before 2024).	<i>Short-Term</i>	\$\$\$\$
<b>D) Policy</b>		<b>Enhance existing parks with amenities and high quality maintenance.</b>		
	i) Action	Maintain current parks to a high level of quality.	<i>Ongoing</i>	\$\$
	ii) Action	Add shade structures and/or shade trees and picnic tables to existing Parks and Recreation System assets.	<i>Short-Term</i>	\$\$\$

# Implementation

ACTION PLAN FOR GOAL 2 - TRAILS AND SIDEWALKS				
Policy No.	Action No.	Recommended Action	Potential Time Frame	Cost
<b>GOAL 2: To add strategic trails and pathways in the community for recreation, leisure, and transportation connections.</b>				
<b>A) Policy</b>		<b>Provide new trails and pathways within the community and connecting to adjacent communities.</b>		
	i) Action	Plan, design, and construct new multi-use trail connections.	<i>Ongoing</i>	\$\$\$
	ii) Action	Provide a diverse array of trail types as the trail system develops.	<i>Short-Term</i>	\$\$
	iii) Action	Plan, design, and construct additional pathways within the community.	<i>Ongoing</i>	\$\$
<b>B) Policy</b>		<b>Enhance existing trails with amenities and high quality maintenance.</b>		
	i) Action	Provide trail off-spots with water, seating, trash bins, and restrooms (if possible).	<i>Ongoing</i>	\$\$
	ii) Action	Maintain current trails with a high level of quality.	<i>Ongoing</i>	\$\$

# Implementation

ACTION PLAN FOR GOAL 3 - RECREATION AND PROGRAMMING				
Policy No.	Action No.	Recommended Action	Potential Time Frame	Cost
<b>GOAL 3: To incrementally build a formal recreation program by introducing new facilities and programming.</b>				
A) Policy		<b>Expand the City's inventory of recreation facilities.</b>		
	i) Action	Plan and design a multi-purpose indoor recreation center including, but not limited to, the following: <ul style="list-style-type: none"> <li>• Areas for children</li> <li>• Areas for adults</li> <li>• Areas for seniors</li> <li>• Gym</li> <li>• Aquatics/indoor pool</li> </ul>	<i>Short-Term</i>	\$\$
	ii) Action	Construct a multi-purpose indoor recreation center.	<i>Long-Term</i>	\$\$\$\$
B) Policy		<b>Build a recreation program within the parks and recreation system.</b>		
	i) Action	Add activity programming to existing facilities and prepare or phase new programming to existing and future facilities.	<i>Ongoing</i>	\$\$
	ii) Action	Continue special events that are well received by the community and continue to add special event programming as parks and recreation staff are added to operate and build them.	<i>Ongoing</i>	\$\$

# Implementation

ACTION PLAN FOR IMPLEMENTATION				
Policy No.	Action No.	Recommended Action	Potential Time Frame	Cost
A) Policy		<b>Begin to build a Parks and Recreation Department within the City organization.</b>		
	i) Action	Hire a minimum of two initial staff to operate and build the City's new Parks and Recreation Department.	<i>Short-Term</i>	\$\$\$
	ii) Action	Develop a strategic plan to plan for the future of the City's new Parks and Recreation Department and its development.	<i>Ongoing</i>	\$\$
B) Policy		<b>Maintain up-to-date and relevant parkland dedication and development fees.</b>		
	i) Action	Review methodology and fees annually to ensure best practices and most relevant fee structure.	<i>Short-Term</i>	\$
C) Policy		<b>Support the addition of new high quality parks in Heath by incentivizing and/or encouraging park development by the private sector.</b>	<i>Ongoing</i>	\$\$

## Texas Parks and Wildlife Department Compliance

---

- Accomplishments
- New public input
- Most recent inventory data
- Updated needs assessment
- Priorities
- New implementation plan
- Demographics
- Population projections
- Goals and objectives
- Standards
- Maps



## Next Steps

---

- Draft has been sent to Staff/Park Board/Council for review and comment.
- Final adjustments/revisions will be completed
- Plan will be posted online for public review
- Public hearing at future Park Board or City Council meeting
- Final draft will be presented for adoption.