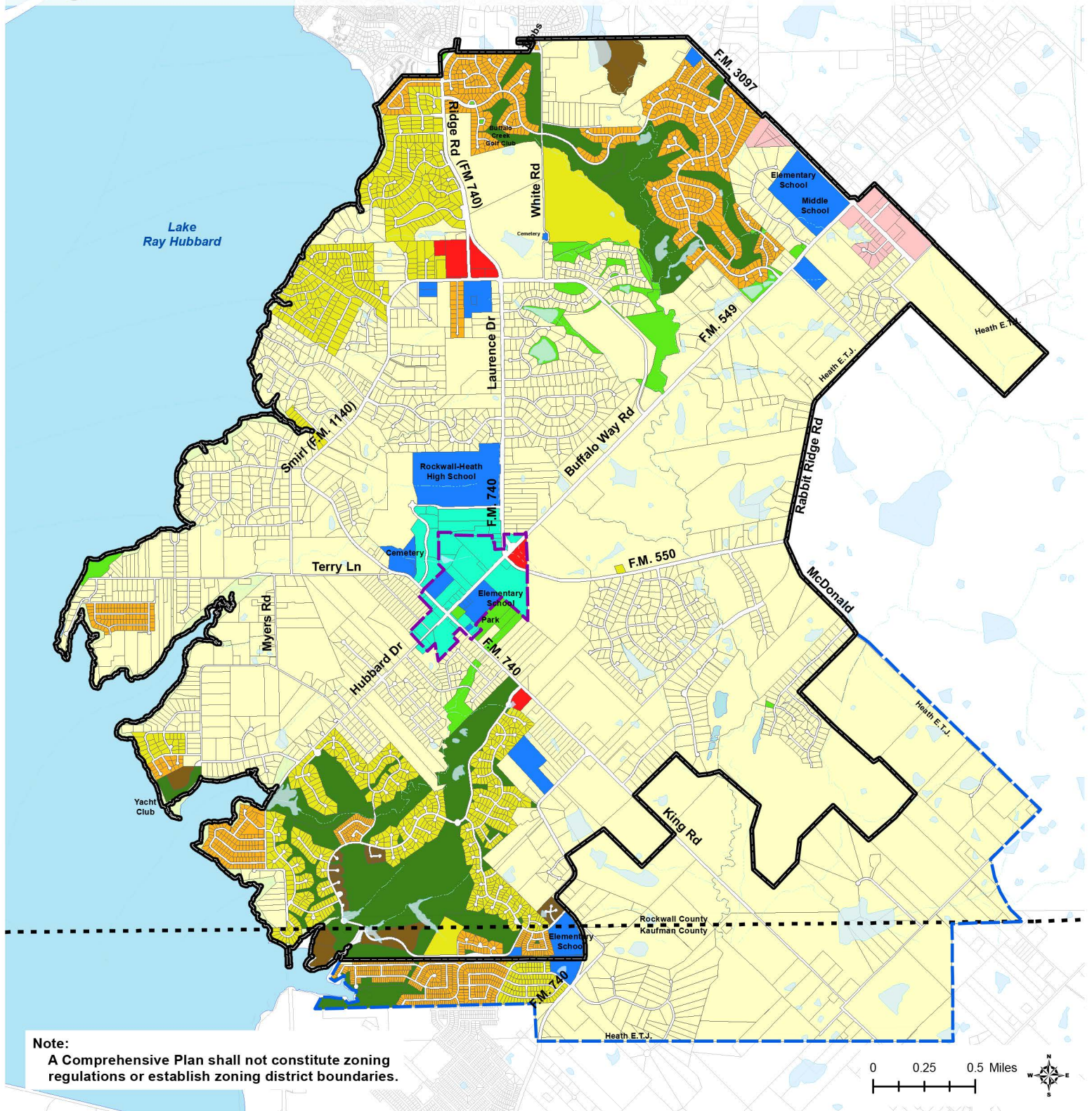
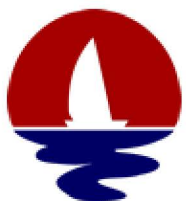








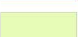
Figure 1. Future Land Use Map

30



Note:
A Comprehensive Plan shall not constitute zoning regulations or establish zoning district boundaries.



- | | | |
|--|--|---|
|  Rural Estates |  Retail |  City Limits |
|  Medium Density Residential |  Parks and Open Space |  ETJ |
|  High Density Residential |  Private Recreation |  County |
|  Townhomes |  Public/Semi-Public |  Lake Ray Hubbard |
|  Mixed Use |  Lake Edge |  Small Lakes and Ponds |
|  Office |  Town Center Overlay (for reference only) |  Streams |