

Smoke Testing of the Wastewater Collection System- Country Club-Eagle Pass Area

Beginning Tuesday, **April 30** and taking approximately **1 weekday (Monday through Thursday, no work on Fridays or on the weekend)**, inspection crews will be conducting a physical survey of a portion of the City of Heath sanitary sewer system. This survey involves the opening and inspecting of manholes and sewer lines in the streets and easements. An important task of the survey will be the **smoke testing** of the sewer lines to locate breaks and defects in the sewer system.

The smoke that you see coming from the vent stacks on houses or holes in the ground is **harmless, has little odor, and creates no fire hazard. The smoke should not enter your home unless you have defective plumbing or dried up drain traps.** If this occurs, you should consult your licensed plumber.

If the harmless smoke enters through faulty plumbing, the potential exists for dangerous sewer gases to enter your home or business. Should smoke enter your home or business, contact a representative of Burgess & Niple (B&N) at (214) 923-3027. A crew member can check the sewer lines around your home or business to possibly determine the source of the smoke.



To prevent smoke from entering your home or business:

- Make sure that all drain traps (also called “U Joints” or “P Traps”) in your home are filled with water by pouring water in the drain. A filled drain trap will keep smoke out of your home or business.



The City of Heath will be working with crews from B&N to conduct the sewer inspections. Crews may need to access sewer manholes in utility easements on your property. Whenever these lines require investigation, members of the inspection crews will need access to the easements of the sewer lines and manholes.

B&N personnel are uniformed and carry identification badges. **Homeowners do not need to be home and no time will field crews need to enter your home or business.**

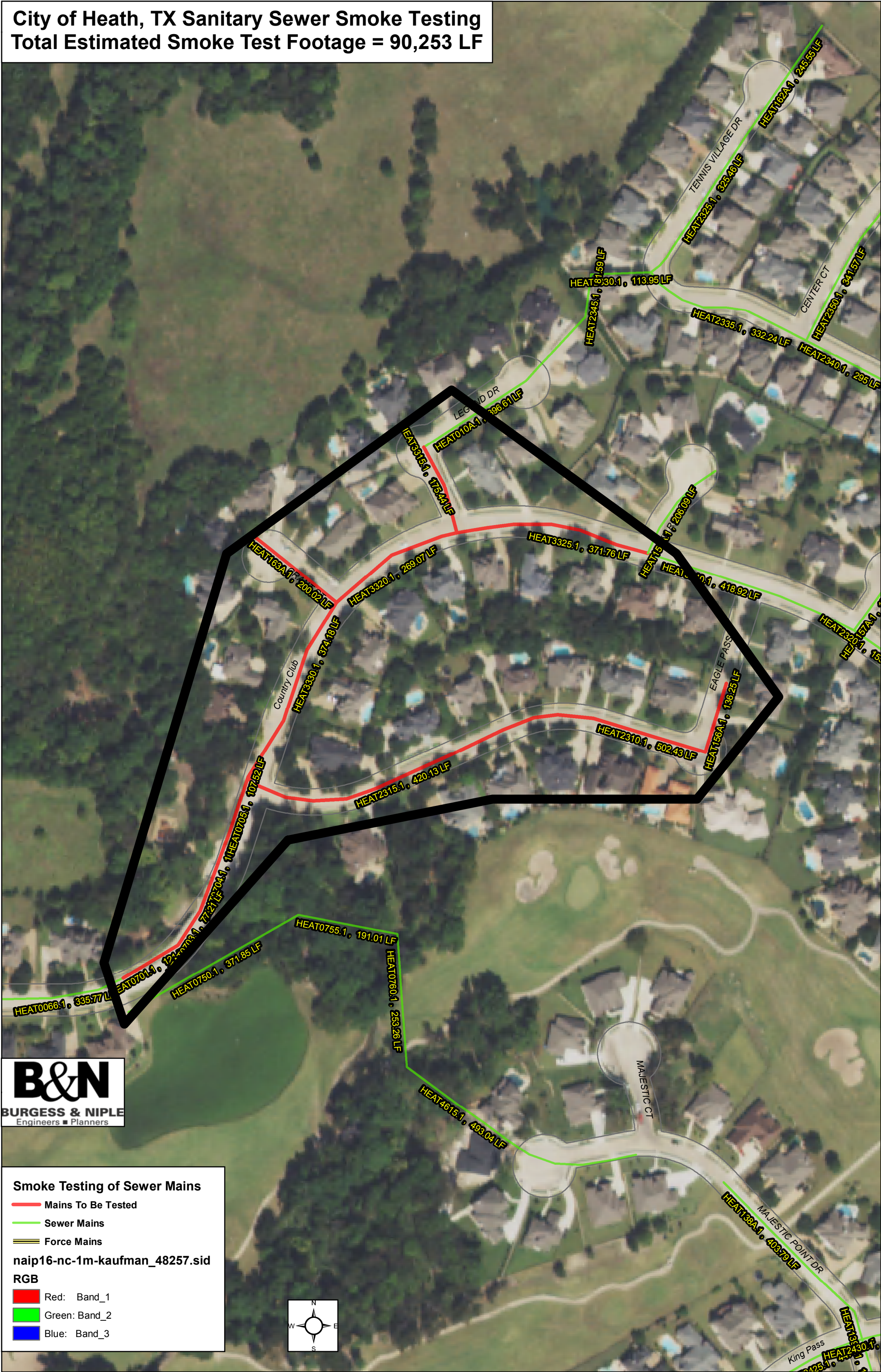
Photographs will be taken of leaks occurring in the system. We anticipate the smoke testing will require a few hours in your area. Your cooperation will be appreciated. The information gained from this testing is being used to improve the quality of your wastewater collection system.

If you would like more information, please contact:

Rene Candanoza
Burgess & Niple
214-923-3027 Cell
www.burgessniple.com

or
Chuck Todd, P.E.
City of Heath
972-961-4885
ctodd@heathtx.com

City of Heath, TX Sanitary Sewer Smoke Testing
Total Estimated Smoke Test Footage = 90,253 LF



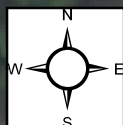
Smoke Testing of Sewer Mains

- Mains To Be Tested
- Sewer Mains
- Force Mains

naip16-nc-1m-kaufman_48257.sid

RGB

- Red: Band_1
- Green: Band_2
- Blue: Band_3



HEAT0066.1, 335.77 LF
 HEAT0704.1, 121.77 LF
 HEAT0703.1, 77.21 LF
 HEAT0750.1, 371.85 LF
 HEAT0755.1, 191.01 LF
 HEAT0760.1, 253.26 LF
 HEAT4615.1, 493.04 LF
 HEAT163A.1, 206.02 LF
 HEAT3330.1, 374.18 LF
 HEAT2315.1, 420.13 LF
 HEAT3320.1, 269.07 LF
 HEAT3335.1, 173.44 LF
 HEAT010A.1, 396.61 LF
 HEAT3325.1, 371.76 LF
 HEAT2310.1, 502.43 LF
 HEAT156A.1, 136.25 LF
 HEAT15.1, 206.09 LF
 HEAT10.1, 418.92 LF
 HEAT2345.1, 113.95 LF
 HEAT2346.1, 323.46 LF
 HEAT2335.1, 332.24 LF
 HEAT2340.1, 295.15 LF
 HEAT2350.1, 341.67 LF
 HEAT102A.1, 245.55 LF
 HEAT2320.1, 15.15 LF
 HEAT138A.1, 403.79 LF
 HEAT2430.1, 425.15 LF
 HEAT2430.1, 425.15 LF