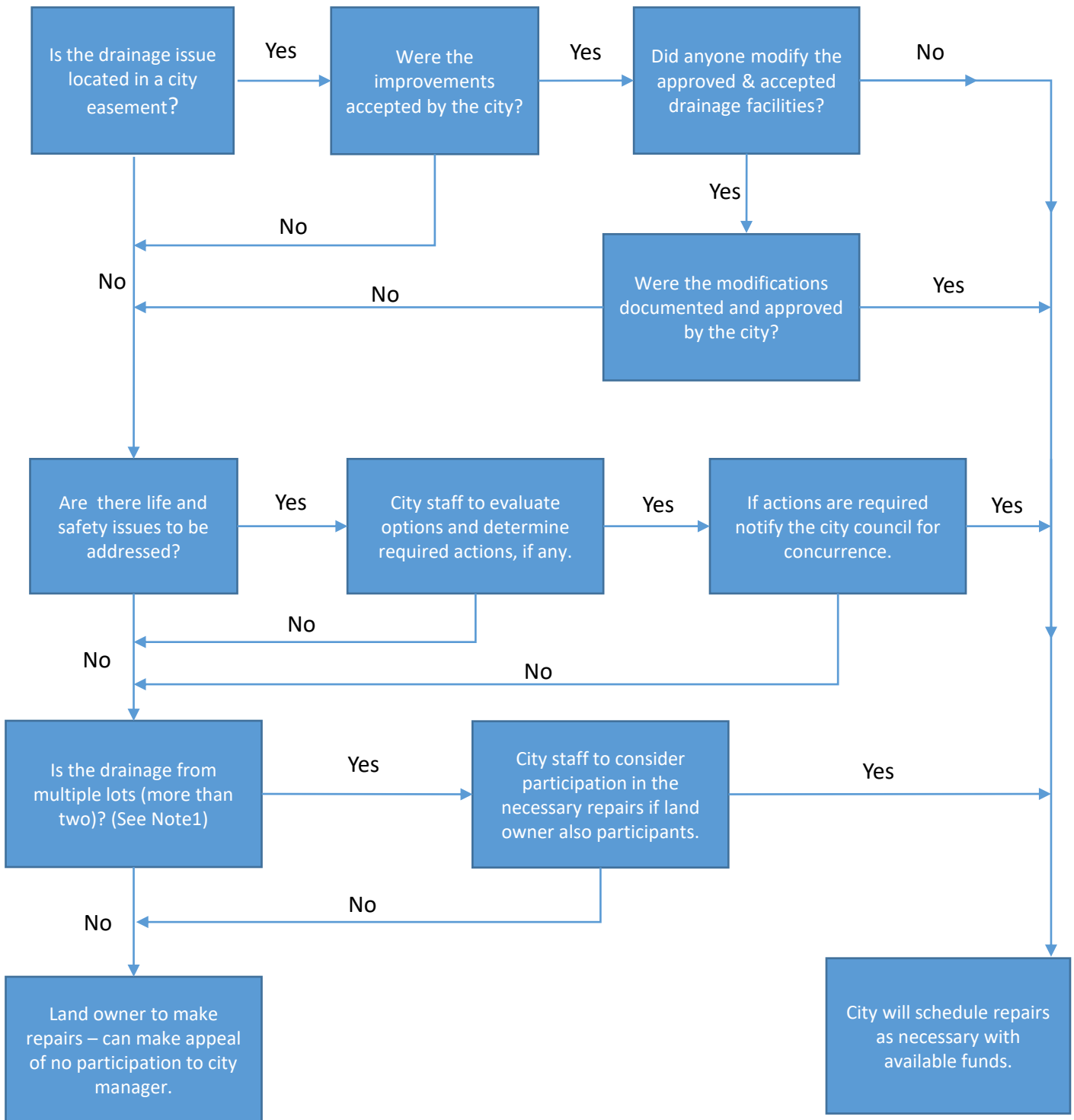


CITY OF HEATH
DRAINAGE PARTICIPATION PROCESS



NOTES:

- (1) Lot-to-lot drainage between two or less lots is considered a private matter unless extraordinary circumstances can be demonstrated by either owner.
- (2) If substandard or damaged drainage facilities are reconstructed to city standards and are contained in a drainage easement to the city, the city will accept and maintain the facilities in the future.
- (3) City staff will begin assessment regarding participation within 30 days of receiving a complete request submitted from the requestor.