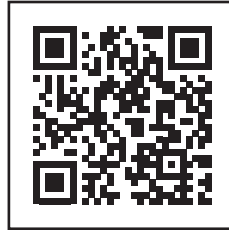


HEATH WATER WISE

UNDERSTANDING THE CITY'S POTABLE WATER INFRASTRUCTURE & DELIVERY SYSTEM

Water is a precious, finite resource. Yet record population growth in North Texas and changing weather patterns are creating greater demand than ever on our water supply and infrastructure.

Addressing this critical issue is a top priority with City Council, management and staff. Public Works Director Matthew Holzapfel, P.E., provided an in-depth analysis of the City's water system during a Council Work Session on March 28 to provide guidance for planning and allocating funding for improvements to meet current and future needs.



You can find to the full the presentation deck and audio on the new section of the City website dedicated to water information, including any changes to restrictions plus tips and resources for saving water.

PRESENTATION HIGHLIGHTS:

Who is the City of Heath's Water Supplier?

The City of Heath's water supplier is the City of Rockwall, which is a member city of the North Texas Municipal Water District (NTMWD).

What is the NTMWD?

The NTMWD is a shared regional system that serves 80 North Texas communities. NTMWD acts as a regional wholesaler of water to its member and customer cities.

How Does the Water Get to My Tap?

Just like any product, there is a water system supply chain that must be operated, maintained and upgraded to provide expected service needs and to meet a constantly growing demand. When this investment is not made, there can be drastic failures. See infographic on the right.

Water is a Commodity

The NTMWD supplies water to 2 million north Texas customers/residents. This number is expected to grow to 3.7 million customers / residents in the next 50 years. Every community will be competing for the same water, which means this limited resource will become more expensive and its use more restricted.

What Resources or "Assets" does NTMWD have to Meet this Growing Demand?

The NTMWD owns and operates:

- Six water treatment plants
- 610+ miles of water transmission pipelines
- 18 major pump stations (raw and treated water)
- Two major water supply sources owned and operated by the NTMWD: Bois D' Arc Lake and East Fork Reuse Project.
- NTMWD also has water rights to draw from Lakes Lavon, Texoma, Chapman (Cooper) and Tawakoni.

What about Lake Ray Hubbard?

NTMWD does NOT draw water from Lake Ray Hubbard, which is a reservoir for the City of Dallas. The level of Lake Ray Hubbard does not affect the conservation needs of NTMWD member and customer cities.

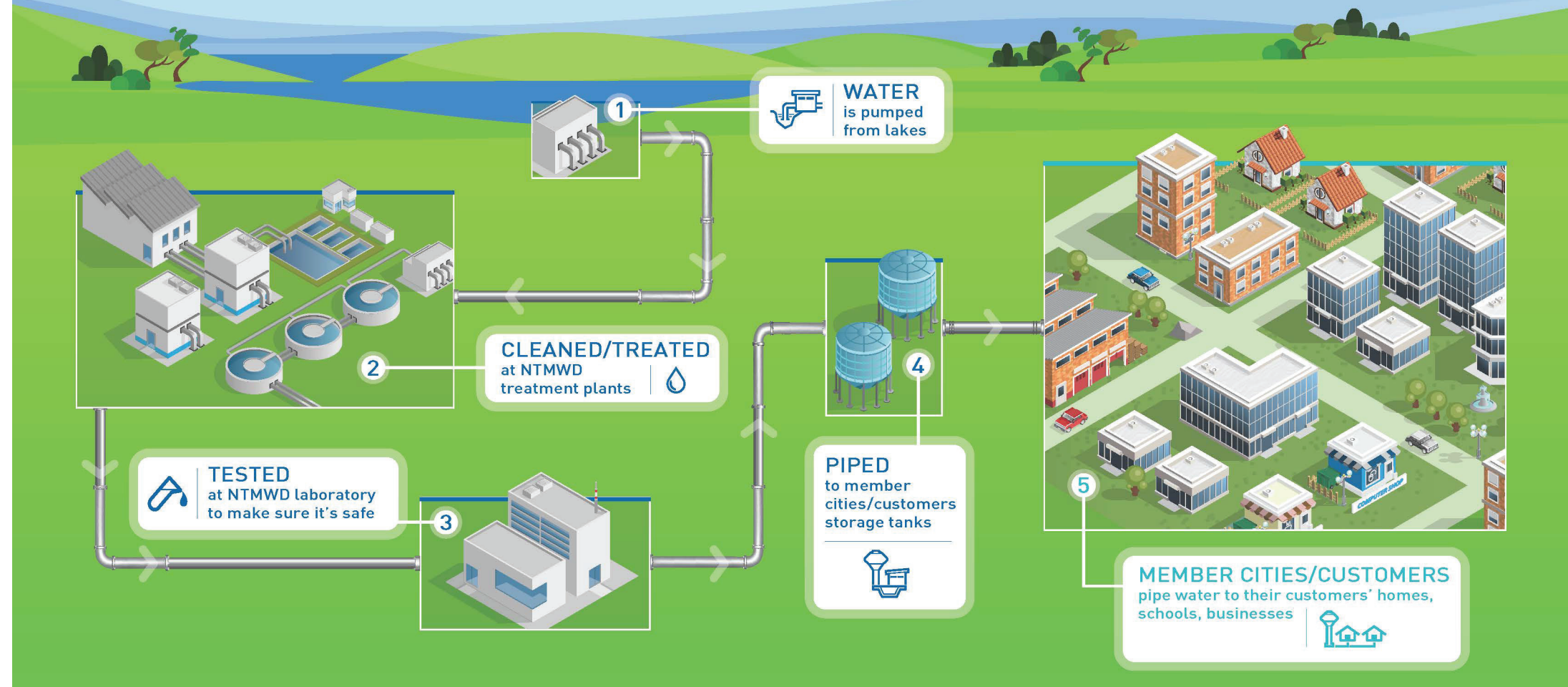
Why Did the City of Heath Go from Stage 1 to Stage 3 Water Restrictions within 3 Days in July 2022?

The City of Heath water supply contract with the City of Rockwall allowed up to 5.5 million gallons per day. But as the hot, dry summer simmered on, Heath customer demand spiked drastically to over 7 million gallons per day. At the same time, NTMWD was struggling to meet Rockwall's overall demand. (Its member city.) Some of NTMWD's supply issues stemmed from unscheduled plant shutdowns that restricted its treated water output in addition to the increased water use system wide. Rockwall directed Heath to immediately reduce water use, thus the rapid acceleration of water restrictions for Heath customers.



GETTING WATER TO YOU

Shared Regional System Serves 80 North Texas Communities



What is Heath's Water Storage Capacity?

Heath's maximum nominal current storage facilities are:

- One, 3-million-gallon ground storage tank
- One, 1.5-million-gallon elevated tank
- One, 0.5-million-gallon elevated tank

However, these storage facilities are rarely full due to operational demands and the greatest amount of storage is almost 4 miles outside of the Heath City limits (near IH 30). Reducing water use in July 2022 was also critical to ensure enough water was stored to supply customers and meet emergency needs such as main breaks or a house or brush fire.

Maintaining, improving and expanding storage capacity and evaluating additional or alternate sources of water supply will remain a top priority for the City of Heath. If you have questions, please contact Matthew Holzapfel, P.E., Director of Public Works at mholzapfel@heathtx.com.

NEXT MONTH:

ISSUE 2 | HEATH WATERWISE: CONSERVATION PLAN

Watch next month for the City's plan for conserving water during the hot summer months. You can start now by making sure your irrigation system is set to water no more than twice per week as allowed by the NTMWD's Water Conservation Plan. You can also sign up for free weekly watering advice customized for our area and find other resources and tips at heathtx.com/water-wise, or scan the QR at the top of this article.

