



# CITY OF HEATH UPDATE

## CITY MANAGER CHAT PODCAST LISTEN NOW

ON YOUR FAVORITE PODCAST PLATFORM

MAY  
2023



### CITY OBSERVES NATIONAL PUBLIC WORKS WEEK MAY 21-27 CONNECTING THE WORLD THROUGH PUBLIC WORKS

The City of Heath will join communities around the country in honoring the employees who play an important role in keeping the community safe and functioning smoothly during National Public Works Week presented May 21-27 by the American Public Works Association.

“Public works professionals focus on infrastructure, facilities and services that are of vital importance to sustainable and resilient communities,” explains City Manager Aretha Adams. “We are pleased to take this opportunity to honor the quiet, hard work that these dedicated people perform to ensure our residents’ comfort and safety.”

Public Works professionals include engineers, managers and employees at all levels of local government and the private sector who are responsible for rebuilding, improving, and protecting the nation’s transportation, water supply, water treatment and solid waste systems, public buildings and other essential facilities as well as park and trails systems.

For many employees, including the Heath Public Works team, this often involves being on call around the clock and serving as first responders during emergencies and service outages.

“During a severe weather incident such as the recent ice storms, our Public Works employees are on the job 24/7 to monitor and repair our infrastructure and respond to citizens as needed,” said Adams. “If a water main breaks in the middle of the night, they are on the job until it’s repaired to ensure the level of service our residents have come to expect,” she added.

Mayor Kelson Elam will issue a proclamation in honor of the City of Heath Public Works Department and its dedication at the City Council meeting

### MAY CELEBRATIONS

Cinco de Mayo	May 5
Mother’s Day	May 14
National Rescue Dog Day	May 20
Memorial Day	May 29



### SAVE THE DATE

#### INDEPENDENCE DAY IN HEATH

Parade begins at 9 a.m., Tuesday, July 4

REGISTRATION REQUIRED

Watch for details next month

on May 23. Staff will also be treated to lunch during the week. To learn more about opportunities to join the Public Works Department, which currently has open positions, please contact Director Matthew Holzapfel, P.E., at mhozapfel@heathtx.com or 972-967-4870.

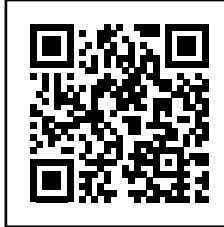
“Public Works offers a wide variety of opportunities to make a positive difference in a community while expanding your own skills, knowledge and career,” said Holzapfel. “Employees gain valuable training and can go on to earn specialized licensing and certifications.”

# HEATH WATER WISE

## UNDERSTANDING THE CITY'S POTABLE WATER INFRASTRUCTURE & DELIVERY SYSTEM

Water is a precious, finite resource. Yet record population growth in North Texas and changing weather patterns are creating greater demand than ever on our water supply and infrastructure.

Addressing this critical issue is a top priority with City Council, management and staff. Public Works Director Matthew Holzapfel, P.E., provided an in-depth analysis of the City's water system during a Council Work Session on March 28 to provide guidance for planning and allocating funding for improvements to meet current and future needs.



You can find to the full the presentation deck and audio on the new section of the City website dedicated to water information, including any changes to restrictions plus tips and resources for saving water.

### PRESENTATION HIGHLIGHTS:

#### Who is the City of Heath's Water Supplier?

The City of Heath's water supplier is the City of Rockwall, which is a member city of the North Texas Municipal Water District (NTMWD).

#### What is the NTMWD?

The NTMWD is a shared regional system that serves 80 North Texas communities. NTMWD acts as a regional wholesaler of water to its member and customer cities.

#### How Does the Water Get to My Tap?

Just like any product, there is a water system supply chain that must be operated, maintained and upgraded to provide expected service needs and to meet a constantly growing demand. When this investment is not made, there can be drastic failures. *See infographic on the right.*

#### Water is a Commodity

The NTMWD supplies water to 2 million north Texas customers/residents. This number is expected to grow to 3.7 million customers / residents in the next 50 years. Every community will be competing for the same water, which means this limited resource will become more expensive and its use more restricted.

#### What Resources or "Assets" does NTMWD have to Meet this Growing Demand?

The NTMWD owns and operates:

- Six water treatment plants
- 610+ miles of water transmission pipelines
- 18 major pump stations (raw and treated water)
- Two major water supply sources owned and operated by the NTMWD: Bois D' Arc Lake and East Fork Reuse Project.
- NTMWD also has water rights to draw from Lakes Lavon, Texoma, Chapman (Cooper) and Tawakoni.

#### What about Lake Ray Hubbard?

NTMWD does NOT draw water from Lake Ray Hubbard, which is a reservoir for the City of Dallas. The level of Lake Ray Hubbard does not affect the conservation needs of NTMWD member and customer cities.

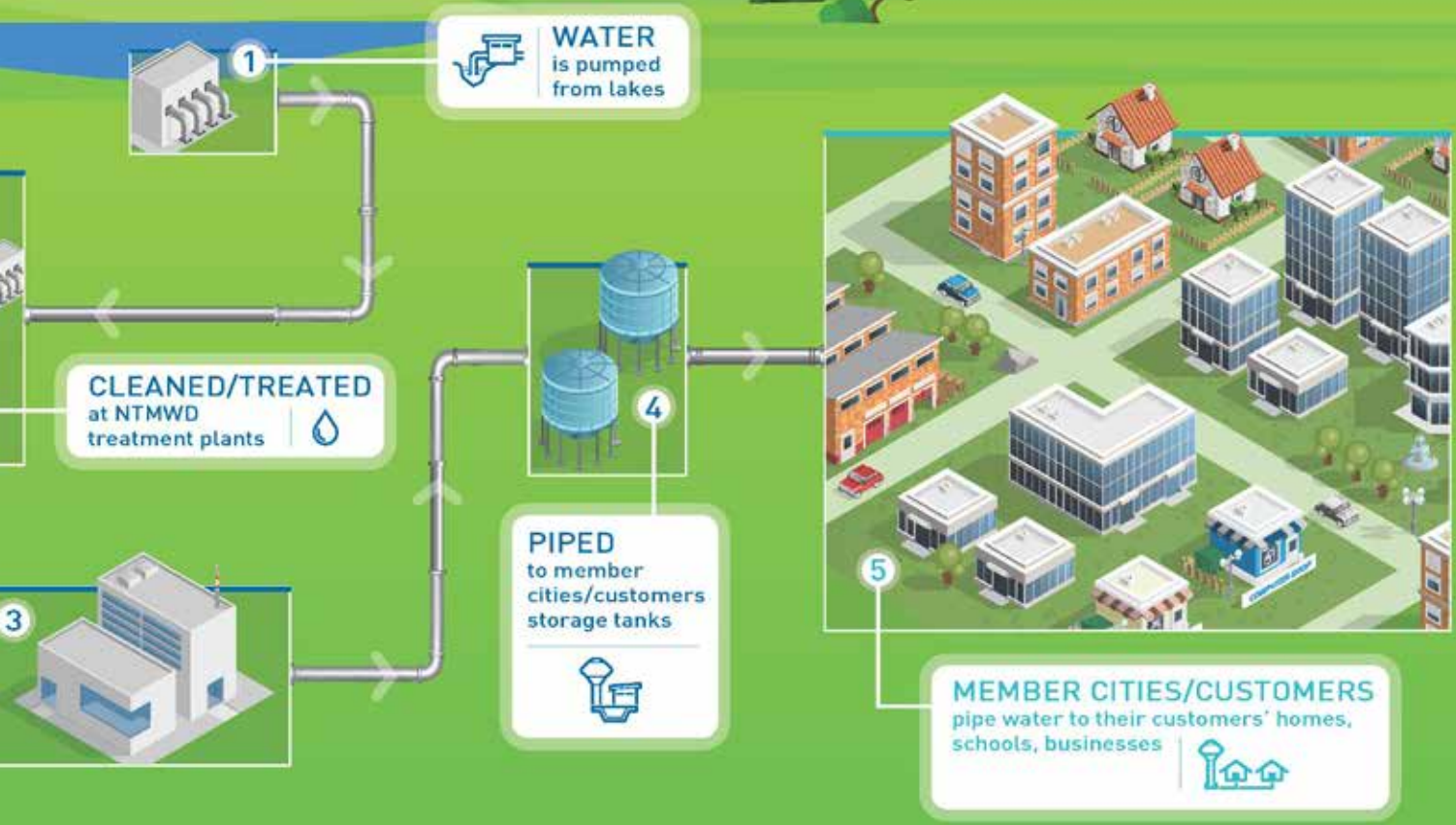
#### Why Did the City of Heath Go from Stage 1 to Stage 3 Water Restrictions within 3 Days in July 2022?

The City of Heath water supply contract with the City of Rockwall allowed up to 5.5 million gallons per day. But as the hot, dry summer simmered on, Heath customer demand spiked drastically to over 7 million gallons per day. At the same time, NTMWD was struggling to meet Rockwall's overall demand. (Its member city.) Some of NTMWD's supply issues stemmed from unscheduled plant shutdowns that restricted its treated water output in addition to the increased water use system wide. Rockwall directed Heath to immediately reduce water use, thus the rapid acceleration of water restrictions for Heath customers.



# BRINGING WATER TO YOU

Regional System Serves 80 North Texas Communities



## What is Heath's Water Storage Capacity?

Heath's maximum nominal current storage facilities are:

- One, 3-million-gallon ground storage tank
- One, 1.5-million-gallon elevated tank
- One, 0.5-million-gallon elevated tank

However, these storage facilities are rarely full due to operational demands and the greatest amount of storage is almost 4 miles outside of the Heath City limits (near IH 30). Reducing water use in July 2022 was also critical to ensure enough water was stored to supply customers and meet emergency needs such as main breaks or a house or brush fire.

Maintaining, improving and expanding storage capacity and evaluating additional or alternate sources of water supply will remain a top priority for the City of Heath. If you have questions, please contact Matthew Holzapfel, P.E., Director of Public Works at [mholzapfel@heathtx.com](mailto:mholzapfel@heathtx.com).

## NEXT MONTH:

### ISSUE 2 | HEATH WATERWISE: CONSERVATION PLAN

Watch next month for the City's plan for conserving water during the hot summer months. You can start now by making sure your irrigation system is set to water no more than twice per week as allowed by the NTMWD's Water Conservation Plan. You can also sign up for free weekly watering advice customized for our area and find other resources and tips at [heathtx.com/water-wise](http://heathtx.com/water-wise), or scan the QR at the top of this article.

**CONNECT WITH YOUR HOMETOWN**  
Find Heath City Manager Chat wherever you get your favorite podcasts or at [heathtx.com](http://heathtx.com)

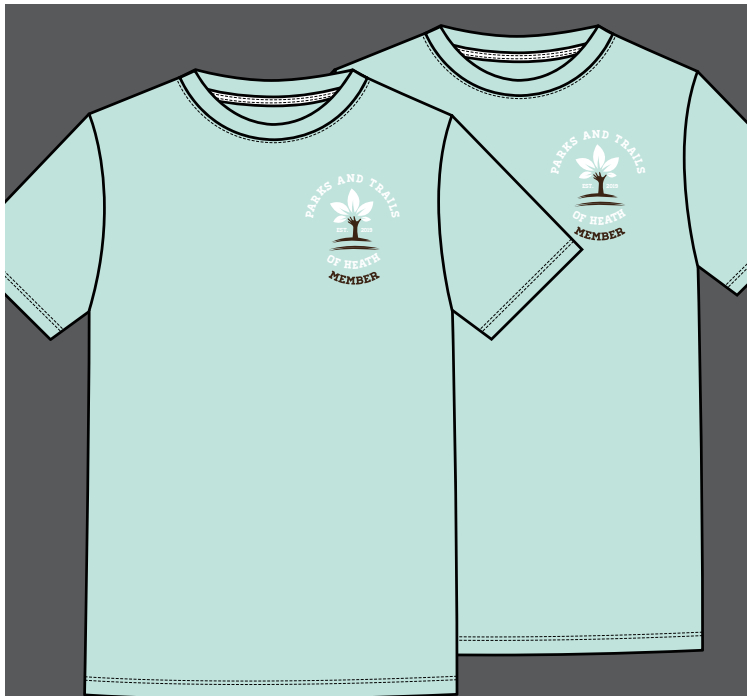
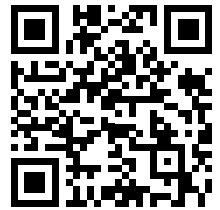
CITY MANAGER CHAT PODCAST



## NEW PATH PROJECT: SUNSET SWINGS AT TERRY PARK

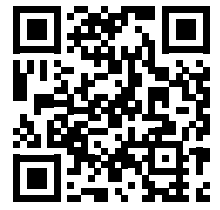
Sunset Swings are coming to Terry Park in 2023, thanks to the generous members of the Parks And Trails of Heath (PATH) program! Existing play equipment will be renovated and expanded to offer an array of swings for all ages and abilities. Additionally, new bench swings will be installed along the path overlooking the lake to give visitors a place to gently sway to lake and sunset views. These swinging benches offer a place to mount a bronze memorial plaque. Watch for updates in the coming months! The new equipment is scheduled for delivery and installation in April.

PATH was created to unite the community in helping grow a great parks and trails system by offering citizens and local businesses the opportunity to participate by making a recurring \$5 or \$10 donation with their monthly utility bill or a one-time contribution. Everyone benefits because great parks, trails and green spaces increase the quality of life, promotes community connection and generates economic benefits, including stronger home values.



### SIGN UP AS A PATH FINDER MEMBER BETWEEN APRIL 1 - APRIL 30, 2023, GET THE NEW PATH MEMBER T-SHIRT!

PATH finder member is a recurring \$10 per month donation with your utility bill. Scan the QR code at the top of the page to find the sign up link.



## SCAN

### SAFE CITIZEN ACTION NETWORK

While severe weather can occur anytime throughout the year, spring remains the peak season for tornados. Take time now to review safety procedures and emergency plans for your family and business on the SCAN landing page., where Heath-specific information will be published when necessary during an emergency.

**FOR THE LATEST CITY OF HEATH NEWS AND INFORMATION VISIT [HEATHTX.COM](http://HEATHTX.COM)**