

City of Heath

Trails and Residential Overlay Map

June 2026



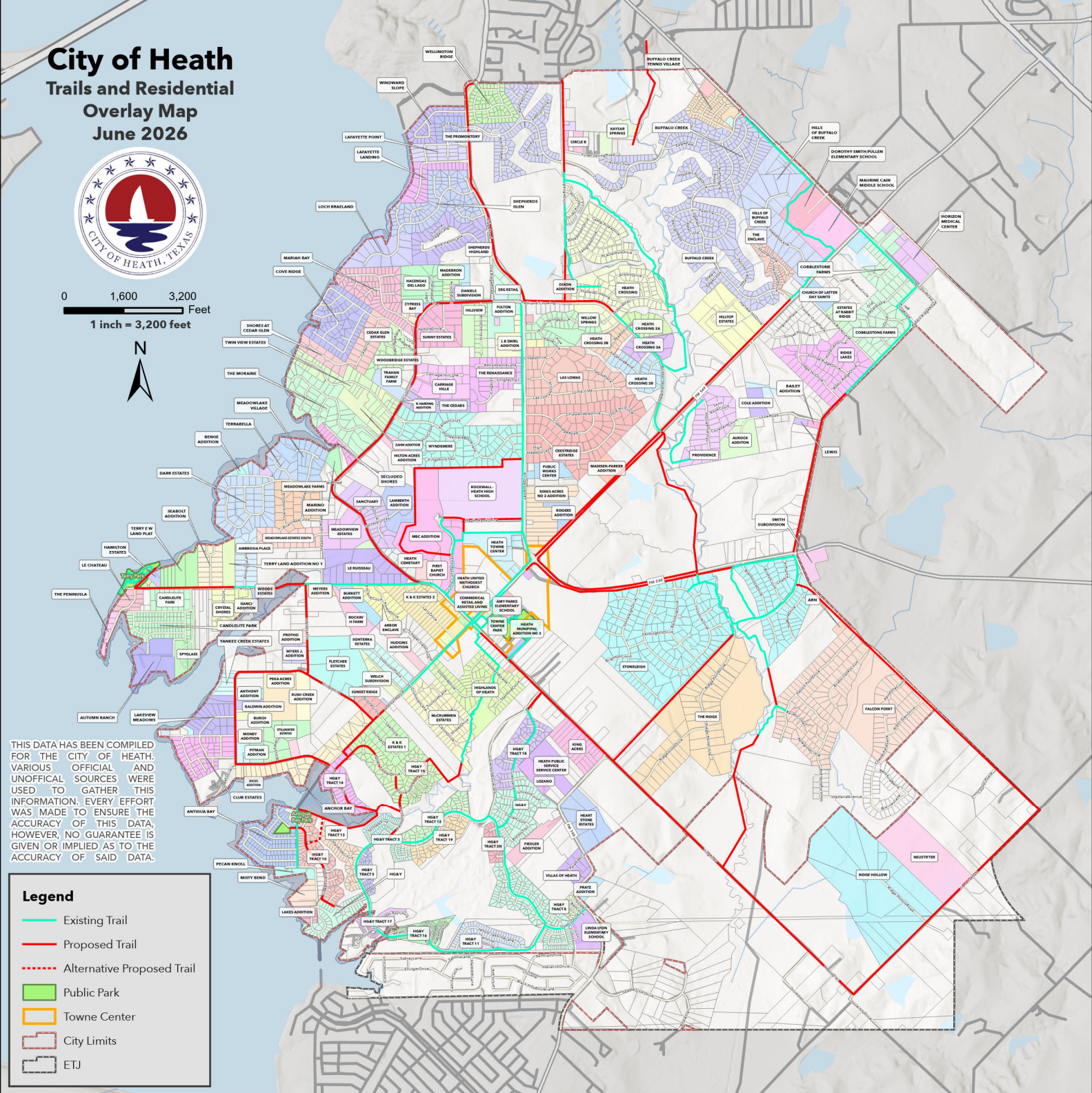
0 1,600 3,200
 Feet
 1 inch = 3,200 feet



THIS DATA HAS BEEN COMPILED FOR THE CITY OF HEATH. VARIOUS OFFICIAL AND UNOFFICIAL SOURCES WERE USED TO GATHER THIS INFORMATION. EVERY EFFORT WAS MADE TO ENSURE THE ACCURACY OF THIS DATA, HOWEVER, NO GUARANTEE IS GIVEN OR IMPLIED AS TO THE ACCURACY OF SAID DATA.

Legend

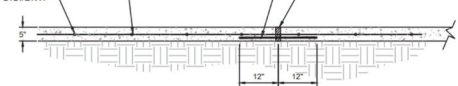
- Existing Trail
- Proposed Trail
- - - Alternative Proposed Trail
- Public Park
- Towne Center
- City Limits
- ETJ



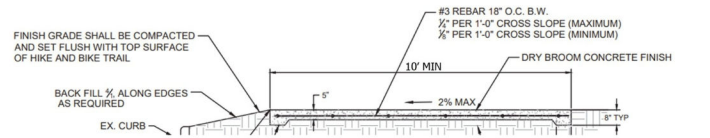
TOOL OR SAW JOINTS TO A DEPTH EQUAL TO 1/4" OF THE THICKNESS OF THE CONCRETE PAVING. 5' O.C. SPACING (5' WIDE TRAIL), 10' O.C. SPACING (10' WIDE TRAIL).

24" LONG #4 STEEL DOWELS AT EXPANSIONS JOINT, 60' O.C. WRAPPED ON ONE END

1/4" REDWOOD EXPANSION JOINT AT 60' O.C. TOP OF EXPANSION JOINT MATERIAL SHALL BE 1/2" MIN. BELOW CONCRETE USING PECOR NR201 WITH PRIMER OR APPROVED EQUAL



HIKE & BIKE TRAIL (LONGITUDINAL SECTION)
 TYPICAL



Adopted by Parks Board: _____
 Date _____ Parks Board Chairman _____